

Datasheet for ABIN759281  
**anti-CTHRC1 antibody (AA 31-130)**

## 6 Images

[Go to Product page](#)

## Overview

Quantity:	100 µL
Target:	CTHRC1
Binding Specificity:	AA 31-130
Reactivity:	Human, Rat
Host:	Rabbit
Clonality:	Polyclonal
Conjugate:	This CTHRC1 antibody is un-conjugated
Application:	Western Blotting (WB), ELISA, Immunofluorescence (Cultured Cells) (IF (cc)), Immunofluorescence (Paraffin-embedded Sections) (IF (p)), Immunohistochemistry (Paraffin- embedded Sections) (IHC (p)), Immunohistochemistry (Frozen Sections) (IHC (fro))

## Product Details

Immunogen:	KLH conjugated synthetic peptide derived from human CTHRC1
Isotype:	IgG
Specificity:	This antibody will recognize all three isoform variants of this protein.
Cross-Reactivity:	Human, Rat
Predicted Reactivity:	Mouse,Dog,Cow,Horse,Rabbit
Purification:	Purified by Protein A.

## Target Details

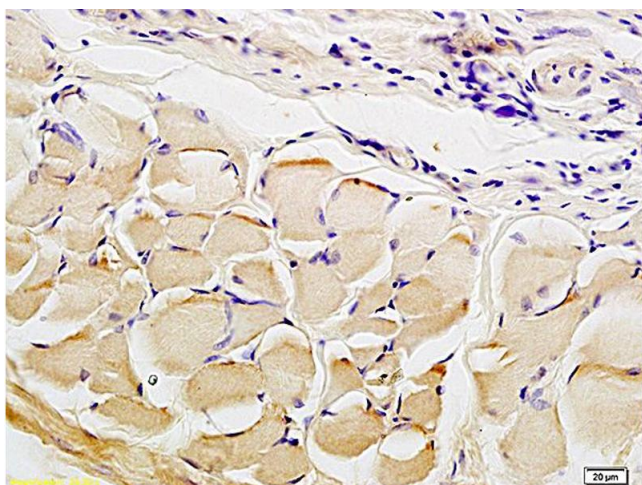
Target:	CTHRC1
Alternative Name:	CTHRC1 ( <a href="#">CTHRC1 Products</a> )
Background:	<p>Synonyms: Collagen triple helix repeat-containing protein 1, Protein NMTC1, CTHRC1, UNQ762/PRO1550</p> <p>Background: CTHRC1 is a protein that may play a role in the cellular response to arterial injury through involvement in vascular remodeling. Mutations at this locus have been associated with Barrett esophagus and esophageal adenocarcinoma. Alternatively spliced transcript variants have been described.</p>
Gene ID:	115908
UniProt:	<a href="#">Q96CG8</a>
Pathways:	<a href="#">Tube Formation</a>

## Application Details

Application Notes:	WB 1:300-5000 ELISA 1:500-1000 IHC-P 1:200-400 IHC-F 1:100-500 IF(IHC-P) 1:50-200 IF(IHC-F) 1:50-200 IF(ICC) 1:50-200
Restrictions:	For Research Use only

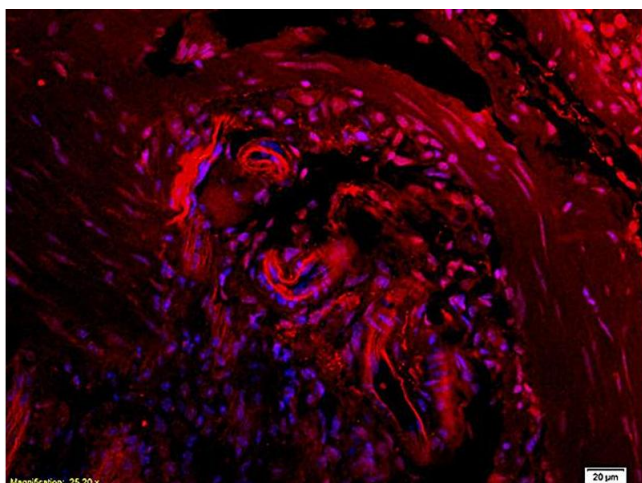
## Handling

Format:	Liquid
Concentration:	1 µg/µL
Buffer:	0.01M TBS( pH 7.4) with 1 % BSA, 0.02 % Proclin300 and 50 % Glycerol.
Preservative:	ProClin
Precaution of Use:	This product contains ProClin: a POISONOUS AND HAZARDOUS SUBSTANCE, which should be handled by trained staff only.
Storage:	4 °C,-20 °C
Storage Comment:	Shipped at 4°C. Store at -20°C for one year. Avoid repeated freeze/thaw cycles.



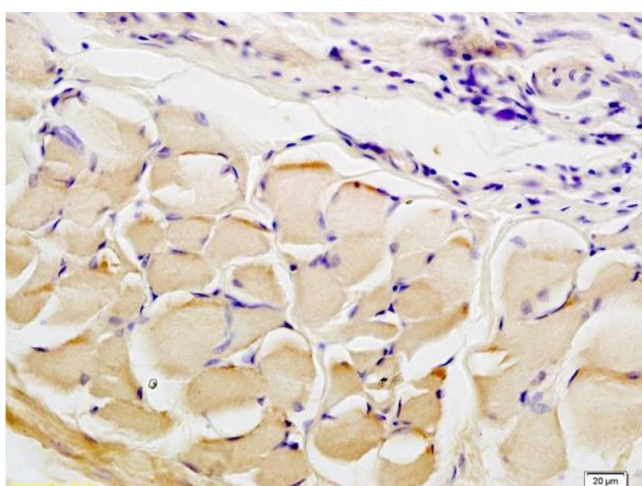
#### Immunohistochemistry

**Image 1.** Formalin-fixed and paraffin embedded smooth muscle of rat colon labeled with Anti CTHRC1 Polyclonal Antibody, Unconjugated (ABIN759281) at 1:200 followed by conjugation to the secondary antibody and DAB staining



#### Immunofluorescence

**Image 2.** L1 rat kidney lysates L2 rat brain lysates probed with Anti CTHRC1 Polyclonal Antibody, Unconjugated (ABIN759281) at 1:200 in 4 °C. Followed by conjugation to secondary antibody at 1:3000 90min in 37 °C. Predicted band 20kD. Observed band size: 20kD



#### Immunohistochemistry

**Image 3.** Formalin-fixed and paraffin embedded rat skin tissue labeled with Anti CTHRC1 Polyclonal Antibody, Unconjugated (ABIN759281) at 1:200 followed by conjugation to the secondary antibody and DAB staining

Please check the [product details page](#) for more images. Overall 6 images are available for ABIN759281.