

Datasheet for ABIN759326
anti-MYH1 antibody (AA 901-1000)[Go to Product page](#)

1 Image

Overview

Quantity:	100 µL
Target:	MYH1
Binding Specificity:	AA 901-1000
Reactivity:	Human, Horse
Host:	Rabbit
Clonality:	Polyclonal
Conjugate:	This MYH1 antibody is un-conjugated
Application:	ELISA, Immunofluorescence (Cultured Cells) (IF (cc)), Immunohistochemistry (Paraffin-embedded Sections) (IHC (p))

Product Details

Immunogen:	KLH conjugated synthetic peptide derived from human Myosin heavy chain 1
Isotype:	IgG
Cross-Reactivity:	Horse, Human
Predicted Reactivity:	Mouse,Rat,Dog,Pig,Chicken
Purification:	Purified by Protein A.

Target Details

Target:	MYH1
Alternative Name:	Myosin heavy chain 1 (MYH1 Products)

Target Details

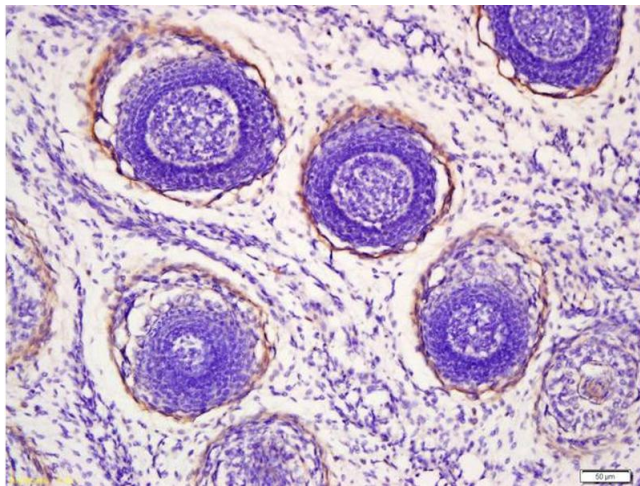
Background:	<p>Synonyms: adult 1, MGC133384, Myh 1, Myh1, MYH1_HUMAN, MyHC-IIx/d, MYHSA1, MYL1, Myosin 1, Myosin heavy chain 1, Myosin heavy chain 1 skeletal muscle adult, Myosin heavy chain, Myosin heavy chain IIx/d, Myosin heavy chain skeletal muscle adult 1, Myosin light chain 1 alkali skeletal fast, Myosin-1, Myosin1, skeletal muscle.</p> <p>Background: Myosin is a protein which is known to interact with actin in muscle and non-muscle cells. It contains two identical heavy chains and four light chains. Myosin molecules consist of two major regions: tails (rods) and heads. They aggregate into filaments through the tail region and interact with actin and with ATP through the head region. Multiple forms of myosin heavy chains exist for each muscle type-skeletal, cardiac, smooth and non-muscle isomyosin forms exist in different types of skeletal muscle, depending on the physiological function of the muscle. They are designated at type I (slow twitch) and type II (fast twitch).</p>
-------------	---

Application Details

Application Notes:	<p>ELISA 1:500-1000</p> <p>IHC-P 1:200-400</p> <p>IF(ICC) 1:50-200</p>
Restrictions:	For Research Use only

Handling

Format:	Liquid
Concentration:	1 µg/µL
Buffer:	0.01M TBS(pH 7.4) with 1 % BSA, 0.02 % Proclin300 and 50 % Glycerol.
Preservative:	ProClin
Precaution of Use:	This product contains ProClin: a POISONOUS AND HAZARDOUS SUBSTANCE, which should be handled by trained staff only.
Storage:	4 °C,-20 °C
Storage Comment:	Shipped at 4°C. Store at -20°C for one year. Avoid repeated freeze/thaw cycles.
Expiry Date:	12 months



Immunohistochemistry

Image 1. Formalin-fixed and paraffin embedded mouse embryo labeled with Anti-Myosin heavy chain 1 Polyclonal Antibody, Unconjugated (ABIN759326) at 1:200 followed by conjugation to the secondary antibody and DAB staining