

Datasheet for ABIN7598783

Rabbit anti-Human IgG (AA 261-275), (C-Term) Antibody[Go to Product page](#)**1** Image

Overview

Quantity:	7 mL
Target:	IgG
Binding Specificity:	AA 261-275, C-Term
Reactivity:	Human
Host:	Rabbit
Clonality:	Monoclonal
Application:	Immunohistochemistry (Paraffin-embedded Sections) (IHC (p))

Product Details

Purpose:	Anti-Human IgG
Immunogen:	Peptide derived from the domain close to the C-terminus of human IgG-1 chain C region. Antibody recognizes the epitope between Ala261 - Lys275.
Clone:	I17-T
Isotype:	IgG
Specificity:	Human IgG

Target Details

Target:	IgG
Abstract:	IgG Products
Target Type:	Antibody

Target Details

Background:	IgG is a monomeric immunoglobulin with two antigen binding sites. IgG represents over 70 % of human serum immunoglobulins. It binds to many pathogens and protects the body via activation of the complement. This antibody recognizes IgG1 and IgG2 subclasses of human IgG.
UniProt:	P01857 , P01859 , P01860 , P01861

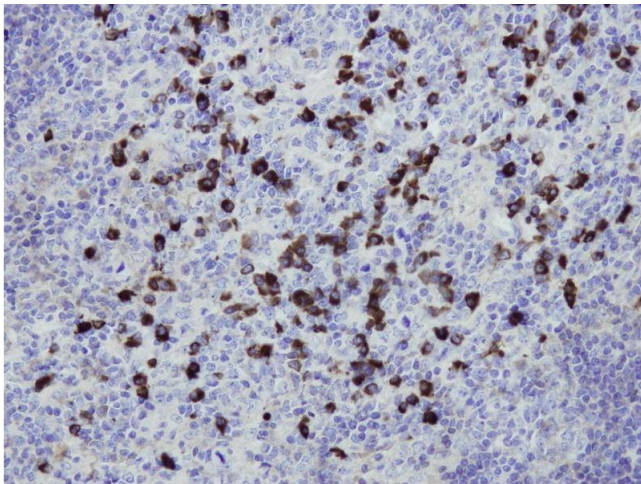
Application Details

Application Notes:	Ready to use antibody dilution. Directly use for application
Restrictions:	For Research Use only

Handling

Format:	Liquid
Buffer:	20 mM Tris-HCl, pH 8.0, Stabilizer: 20 mg/mL BSA, Preservative: 0.05 % sodium azide
Preservative:	Sodium azide
Precaution of Use:	This product contains Sodium azide: a POISONOUS AND HAZARDOUS SUBSTANCE which should be handled by trained staff only.
Storage:	4 °C
Storage Comment:	+4°C, Do not freeze!

Images



Immunohistochemistry

Image 1.