

Datasheet for ABIN7598807

anti-Ki-67 antibody[Go to Product page](#)**2** Images

Overview

Quantity:	7 mL
Target:	Ki-67 (MKI67)
Reactivity:	Human
Host:	Rabbit
Clonality:	Monoclonal
Conjugate:	This Ki-67 antibody is un-conjugated
Application:	Immunohistochemistry (Paraffin-embedded Sections) (IHC (p))

Product Details

Purpose:	Anti-Ki-67
Immunogen:	Peptide within N terminal sequence of human Ki-67.
Clone:	M17-I
Isotype:	IgG

Target Details

Target:	Ki-67 (MKI67)
Alternative Name:	Ki-67 (MKI67 Products)
Background:	Ki-67 (also known as MKI67) is a well-established nuclear protein used as a marker of cell proliferation. It is present during all active phases of the cell cycle (G1, S, G2, and M phases), but absent in resting cells (G0 phase). In clinical pathology, Ki-67 immunostaining is widely used to assess the growth fraction of tumors and serves as a prognostic and predictive marker in

Target Details

various cancers, including breast, prostate, and brain tumors.

UniProt: [P46013](#)

Pathways: [Glycosaminoglycan Metabolic Process](#)

Application Details

Application Notes: Ready to use antibody dilution. Directly use for application

Restrictions: For Research Use only

Handling

Format: Liquid

Buffer: 20 mM Tris-HCl, pH 8.0, Stabilizer: 20 mg/mL BSA, Preservative: 0.05 % sodium azide

Preservative: Sodium azide

Precaution of Use: This product contains Sodium azide: a POISONOUS AND HAZARDOUS SUBSTANCE which should be handled by trained staff only.

Storage: 4 °C

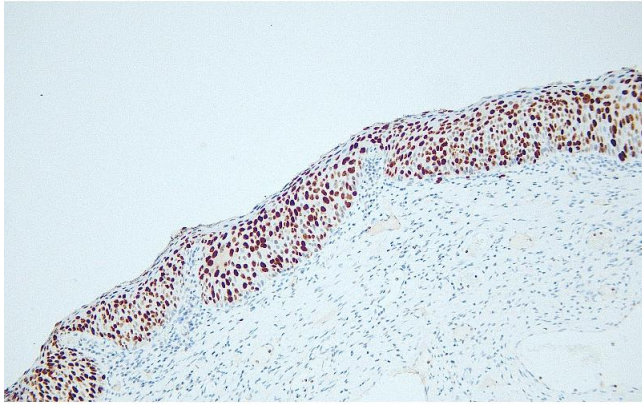
Storage Comment: +4°C, Do not freeze!

Images



Immunohistochemistry

Image 1.



Immunohistochemistry

Image 2.