

Datasheet for ABIN759911
anti-MAS1 antibody (AA 51-150)[Go to Product page](#)

1 Image

Overview

Quantity:	100 µL
Target:	MAS1
Binding Specificity:	AA 51-150
Reactivity:	Human, Mouse
Host:	Rabbit
Clonality:	Polyclonal
Conjugate:	This MAS1 antibody is un-conjugated
Application:	Western Blotting (WB), ELISA, Immunohistochemistry (Paraffin-embedded Sections) (IHC (p))

Product Details

Immunogen:	KLH conjugated synthetic peptide derived from human MAS1
Isotype:	IgG
Cross-Reactivity:	Human, Mouse
Predicted Reactivity:	Rat,Dog,Cow,Sheep,Pig,Horse,Rabbit,Guinea Pig
Purification:	Purified by Protein A.

Target Details

Target:	MAS1
Alternative Name:	MAS1 (MAS1 Products)
Background:	Synonyms: MAS, MGRA, Proto-oncogene Mas, MAS1

Target Details

Background: Receptor for angiotensin 1-7 (By similarity). Acts specifically as a functional antagonist of AGTR1 (angiotensin-2 type 1 receptor), although it up-regulates AGTR1 receptor levels. Positive regulation of AGTR1 levels occurs through activation of the G-proteins GNA11 and GNAQ, and stimulation of the protein kinase C signaling cascade. The antagonist effect on AGTR1 function is probably due to AGTR1 being physically altered by MAS1.

Gene ID: 4142

UniProt: [P04201](#)

Pathways: [ACE Inhibitor Pathway](#), [Regulation of Carbohydrate Metabolic Process](#)

Application Details

Application Notes: WB 1:300-5000
ELISA 1:500-1000
IHC-P 1:200-400

Restrictions: For Research Use only

Handling

Format: Liquid

Concentration: 1 µg/µL

Buffer: 0.01M TBS(pH 7.4) with 1 % BSA, 0.02 % Proclin300 and 50 % Glycerol.

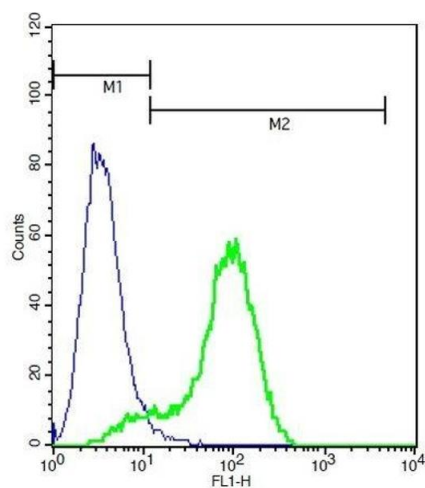
Preservative: ProClin

Precaution of Use: This product contains ProClin: a POISONOUS AND HAZARDOUS SUBSTANCE, which should be handled by trained staff only.

Storage: 4 °C,-20 °C

Storage Comment: Shipped at 4°C. Store at -20°C for one year. Avoid repeated freeze/thaw cycles.

Expiry Date: 12 months



Flow Cytometry

Image 1. Human A549 lysates probed with Rabbit Anti-MAS1 Polyclonal Antibody, Unconjugated (ABIN759911) (green) at 1:50 for 40 minutes followed by a FITC conjugated secondary compared to control cells (blue).