



Datasheet for ABIN759926
anti-MAS1L antibody (AA 201-300)



[Go to Product page](#)

4 Images

Overview

Quantity:	100 µL
Target:	MAS1L
Binding Specificity:	AA 201-300
Reactivity:	Human, Rat
Host:	Rabbit
Clonality:	Polyclonal
Conjugate:	This MAS1L antibody is un-conjugated
Application:	ELISA, Western Blotting (WB), Immunofluorescence (Cultured Cells) (IF (cc)), Immunofluorescence (Paraffin-embedded Sections) (IF (p)), Immunohistochemistry (Paraffin-embedded Sections) (IHC (p)), Immunohistochemistry (Frozen Sections) (IHC (fro)), Immunocytochemistry (ICC)

Product Details

Immunogen:	KLH conjugated synthetic peptide derived from human MAS1L
Isotype:	IgG
Cross-Reactivity:	Human, Rat
Purification:	Purified by Protein A.

Target Details

Target:	MAS1L
Alternative Name:	Mas1l (MAS1L Products)

Target Details

Background: Synonyms: MRG, MAS-L, dJ994E9.2, Mas-related G-protein coupled receptor MRG, MAS-R, MAS1-like, MAS1L
Background: Belongs to the G-protein coupled receptor 1 family. Mas subfamily.

Gene ID: 116511

UniProt: [P35410](#)

Application Details

Application Notes: WB 1:300-5000
ELISA 1:500-1000
IHC-P 1:200-400
IHC-F 1:100-500
IF(IHC-P) 1:50-200
IF(IHC-F) 1:50-200
IF(ICC) 1:50-200
ICC 1:100-500

Restrictions: For Research Use only

Handling

Format: Liquid

Concentration: 1 µg/µL

Buffer: 0.01M TBS(pH 7.4) with 1 % BSA, 0.02 % Proclin300 and 50 % Glycerol.

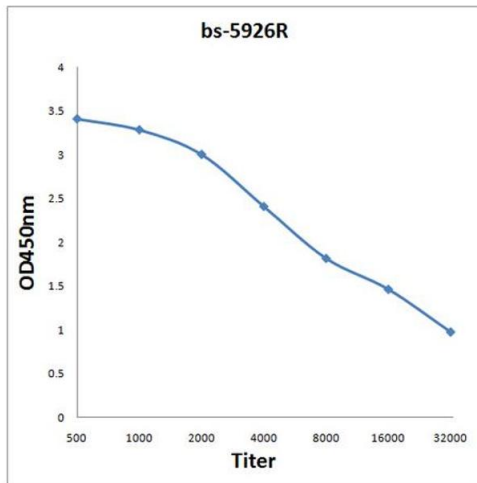
Preservative: ProClin

Precaution of Use: This product contains ProClin: a POISONOUS AND HAZARDOUS SUBSTANCE, which should be handled by trained staff only.

Storage: 4 °C,-20 °C

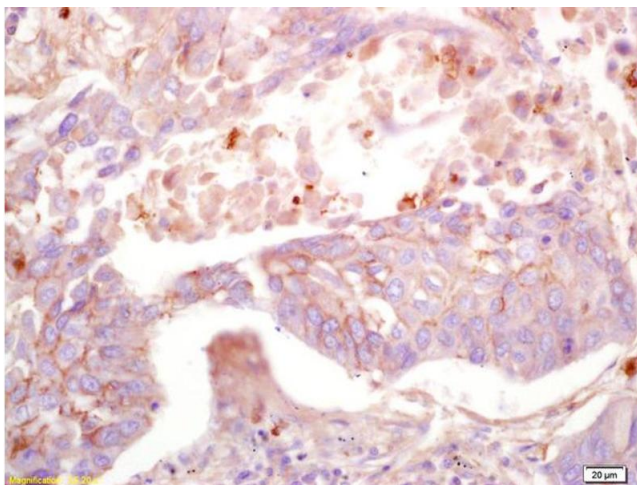
Storage Comment: Shipped at 4°C. Store at -20°C for one year. Avoid repeated freeze/thaw cycles.

Expiry Date: 12 months



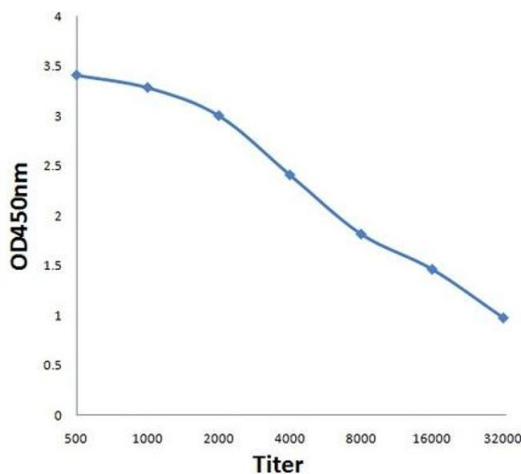
ELISA

Image 1. Antigen: 0.2 µg/100 µL Primary: Antiserum, 1:500, 1:1000, 1:2000, 1:4000, 1:8000, 1:16000, 1:32000; Secondary: HRP conjugated Goat Anti-Rabbit IgG at 1: 5000; TMB staining; Read the data in Microplate Reader by 450nm



Immunohistochemistry

Image 2. Formalin-fixed and paraffin embedded human lung carcinoma labeled with Anti-MAS1L Polyclonal Antibody, Unconjugated (ABIN759926) at 1:200 followed by conjugation to the secondary antibody and DAB staining.



ELISA

Image 3. Antigen: 0.2ug/100ul, Primary: Antiserum, 1:500, 1:1000, 1:2000, 1:4000, 1:8000, 1:16000, 1:32000, Secondary: HRP conjugated Goat Anti-Rabbit IgG at 1: 5000, TMB staining Read the data in Microplate Reader by 450nm,

Please check the [product details page](#) for more images. Overall 4 images are available for ABIN759926.