

Datasheet for ABIN759941  
**anti-ANP32C antibody (AA 81-180)**

## 6 Images

[Go to Product page](#)

## Overview

Quantity:	100 µL
Target:	ANP32C
Binding Specificity:	AA 81-180
Reactivity:	Human, Mouse, Rat
Host:	Rabbit
Clonality:	Polyclonal
Conjugate:	This ANP32C antibody is un-conjugated
Application:	Western Blotting (WB), ELISA, Immunofluorescence (Cultured Cells) (IF (cc)), Immunofluorescence (Paraffin-embedded Sections) (IF (p)), Immunohistochemistry (Frozen Sections) (IHC (fro)), Immunohistochemistry (Paraffin-embedded Sections) (IHC (p))

## Product Details

Immunogen:	KLH conjugated synthetic peptide derived from human ANP32C
Isotype:	IgG
Cross-Reactivity:	Human, Mouse, Rat
Predicted Reactivity:	Dog,Cow,Horse,Rabbit
Purification:	Purified by Protein A.

## Target Details

Target:	ANP32C
---------	--------

## Target Details

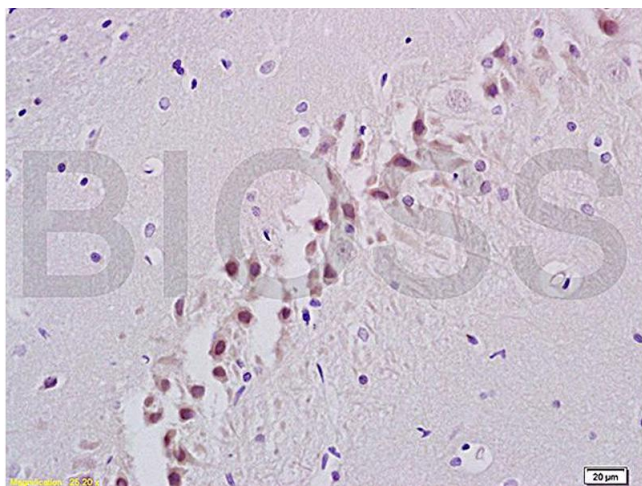
Alternative Name:	ANP32C ( <a href="#">ANP32C Products</a> )
Background:	<p>Synonyms: PP32R1, Acidic leucine-rich nuclear phosphoprotein 32 family member C, Phosphoprotein 32-related protein 1, Tumorigenic protein pp32r1, ANP32C</p> <p>Background: The protein encoded by ANP32C is one of at least two proteins that are similar in amino acid sequence to PP32 and are part of the same acidic nuclear phosphoprotein gene family. However, unlike PP32, the encoded protein is tumorigenic. The tumor suppressor function of PP32 has been localized to a 25 amino acid region that is divergent between PP32 and the protein encoded by this gene. This gene does not contain introns.</p>
Gene ID:	23520
UniProt:	<a href="#">O43423</a>

## Application Details

Application Notes:	WB 1:300-5000 ELISA 1:500-1000 IHC-P 1:200-400 IHC-F 1:100-500 IF(IHC-P) 1:50-200 IF(IHC-F) 1:50-200 IF(ICC) 1:50-200
Restrictions:	For Research Use only

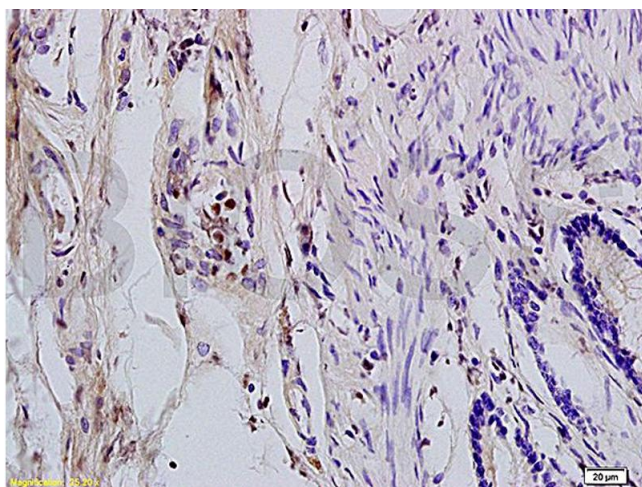
## Handling

Format:	Liquid
Concentration:	1 µg/µL
Buffer:	0.01M TBS( pH 7.4) with 1 % BSA, 0.02 % Proclin300 and 50 % Glycerol.
Preservative:	ProClin
Precaution of Use:	This product contains ProClin: a POISONOUS AND HAZARDOUS SUBSTANCE, which should be handled by trained staff only.
Storage:	4 °C,-20 °C
Storage Comment:	Shipped at 4°C. Store at -20°C for one year. Avoid repeated freeze/thaw cycles.
Expiry Date:	12 months



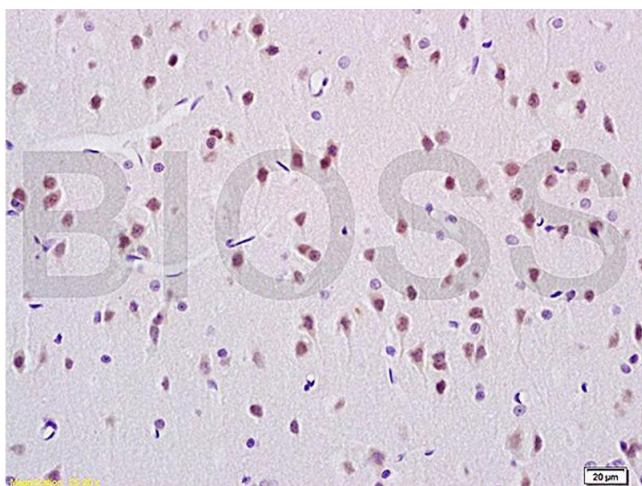
#### Immunohistochemistry

**Image 1.** Formalin-fixed and paraffin embedded human colon carcinoma labeled with Rabbit Anti ANP32C Polyclonal Antibody, Unconjugated (ABIN759941) at 1:200 followed by conjugation to the secondary antibody and DAB staining



#### Immunohistochemistry

**Image 2.** Antigen: 0.2 μg/100 μL Primary: Antiserum, 1:500, 1:1000, 1:2000, 1:4000, 1:8000, 1:16000, 1:32000; Secondary: HRP conjugated Goat-Anti-Rabbit IgG at 1: 5000; TMB staining; Read the data in MicroplateReader by 450



#### Immunohistochemistry

**Image 3.** Formalin-fixed and paraffin embedded rat brain labeled with Rabbit Anti ANP32C Polyclonal Antibody, Unconjugated (ABIN759941) at 1:200 followed by conjugation to the secondary antibody and DAB staining

Please check the [product details page](#) for more images. Overall 6 images are available for ABIN759941.