



Datasheet for ABIN760166 anti-SET/TAF-I antibody



[Go to Product page](#)

1 Image

Overview

Quantity:	100 µL
Target:	SET/TAF-I (SET)
Reactivity:	Human, Mouse, Rat
Host:	Rabbit
Clonality:	Polyclonal
Conjugate:	This SET/TAF-I antibody is un-conjugated
Application:	Western Blotting (WB), Flow Cytometry (FACS), Immunocytochemistry (ICC)

Product Details

Immunogen:	KLH conjugated synthetic peptide derived from human SET
Isotype:	IgG
Cross-Reactivity:	Human
Predicted Reactivity:	Mouse,Rat,Dog,Cow,Horse,Chicken,Rabbit
Purification:	Purified by Protein A.

Target Details

Target:	SET/TAF-I (SET)
Alternative Name:	Set (SET Products)
Background:	Optional[synonyms]: SET_HUMAN, Protein SET, HLA-DR-associated protein II, Inhibitor of granzyme A-activated DNase (IGAAD), PHAPII, Phosphatase 2A inhibitor I2PP2A (I-2PP2A),

Target Details

Template-activating factor I (TAF-I), 2PP2A, IGAAD, MRD58, TAF-I, I2PP2A, IPP2A2, PHAPII, TAF-IBETA,

Gene ID: 6418

UniProt: [Q01105](#)

Pathways: [Apoptosis](#)

Application Details

Application Notes: WB: 1:100-1000, FCM: 1:20-100, IHC-P: 1:100-500, IF(IHC-P): 1:50-200
Optimal working dilution should be determined by the investigator.

Restrictions: For Research Use only

Handling

Format: Liquid

Concentration: 1 mg/mL

Buffer: 0.01M TBS(pH 7.4) with 1 % BSA, 0.02 % Proclin300 and 50 % Glycerol.

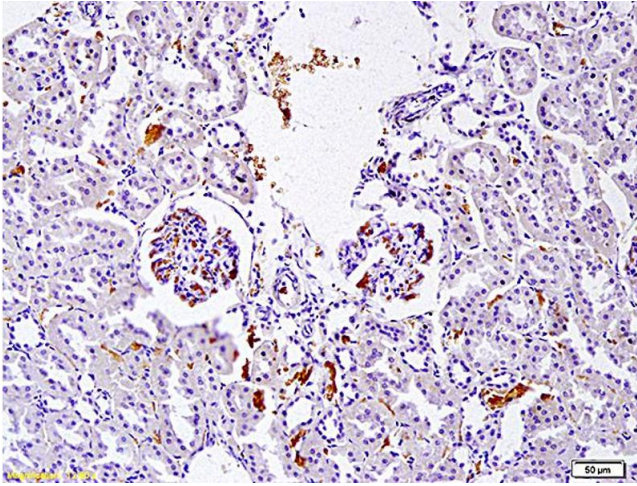
Preservative: Sodium azide

Precaution of Use: This product contains Sodium azide: a POISONOUS AND HAZARDOUS SUBSTANCE which should be handled by trained staff only.

Storage: 4 °C, -20 °C

Storage Comment: Shipped at 4°C. Store at -20°C for one year. Avoid repeated freeze/thaw cycles.

Expiry Date: 12 months



Immunohistochemistry

Image 1. Formalin-fixed and paraffin embedded rat nephroblastoma labeled with Anti SET Polyclonal Antibody, Unconjugated (ABIN760166) at 1:200 followed by conjugation to the secondary antibody and DAB staining