

Datasheet for ABIN7606892

Recombinant anti-Fibronectin antibody[Go to Product page](#)**3** Images

Overview

Quantity:	100 µL
Target:	Fibronectin
Reactivity:	Human
Host:	Rabbit
Antibody Type:	Recombinant Antibody
Clonality:	Monoclonal
Conjugate:	This Fibronectin antibody is un-conjugated
Application:	Western Blotting (WB), Immunohistochemistry (IHC), Immunofluorescence (IF), Immunocytochemistry (ICC)

Product Details

Purpose:	Fibronectin Rabbit mAb
Immunogen:	A synthesized peptide derived from human Fibronectin
Isotype:	IgG
Specificity:	Fibronectin Antibody detects endogenous levels of Fibronectin
Purification:	Affinity-chromatography
Grade:	KD Validated

Target Details

Target:	Fibronectin
---------	-------------

Target Details

Abstract:	Fibronectin Products
Background:	Anastellin, CIG, Cold-insoluble globulin, ED-B, Fibronectin, fibronectin 1, FINC, FN1, FNZ, GFND, GFND2, LETS, migration-stimulating factor, MSF,
Molecular Weight:	263kDa
UniProt:	P02751

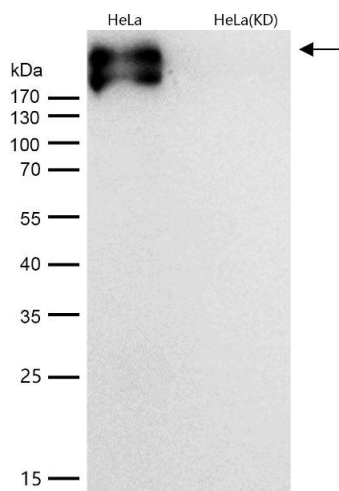
Application Details

Application Notes:	WB 1:500~1:2000 IHC 1:50~1:200 ICC/IF 1:50~1:200
Restrictions:	For Research Use only

Handling

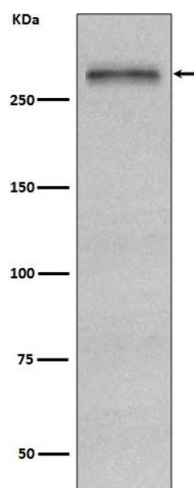
Buffer:	phosphate buffered saline , pH 7.4, 150 mM NaCl, 0.02 % sodium azide and 50 % glycerol.
Preservative:	Sodium azide
Precaution of Use:	This product contains Sodium azide: a POISONOUS AND HAZARDOUS SUBSTANCE which should be handled by trained staff only.
Storage:	4 °C,-20 °C
Storage Comment:	Store at +4°C short term. Store at -20°C long term. Avoid freeze / thaw cycle.

Images



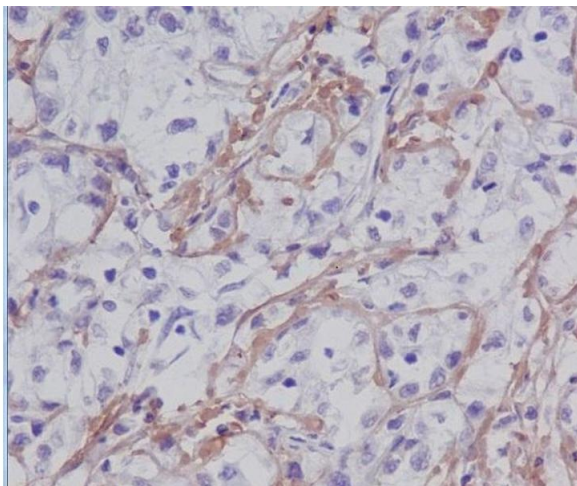
Western Blotting

Image 1. All lanes use the Antibody at 1:1K dilution for 1 hour at room temperature. FN1 Fibronectins bind cell surfaces and various compounds including collagen, fibrin, heparin, DNA, and actin. Fibronectins are involved in cell adhesion, cell motility, opsonization, wound healing, and maintenance of cell shape. Mostly heterodimers or multimers of alternatively spliced variants, connected by 2 disulfide bonds near the carboxyl ends



Western Blotting

Image 2. Western blot analysis of Fibronectin expression in HepG2 cell lysate.



Immunohistochemistry (Paraffin-embedded Sections)

Image 3. Immunohistochemical analysis of paraffin-embedded human liver cancer, using Fibronectin Antibody.