

Datasheet for ABIN7606920

## Recombinant anti-14-3-3 gamma antibody



[Go to Product page](#)

### 2 Images

#### Overview

Quantity:	100 µL
Target:	14-3-3 gamma (YWHAG1)
Reactivity:	Human, Mouse, Rat
Host:	Rabbit
Antibody Type:	Recombinant Antibody
Clonality:	Monoclonal
Conjugate:	This 14-3-3 gamma antibody is un-conjugated
Application:	Western Blotting (WB), Flow Cytometry (FACS)

#### Product Details

Purpose:	14-3-3 gamma Rabbit mAb
Immunogen:	A synthesized peptide derived from human 14-3-3 gamma
Isotype:	IgG
Specificity:	14-3-3 gamma Antibody detects endogenous levels of 14-3-3 gamma
Purification:	Affinity-chromatography
Grade:	KD Validated

#### Target Details

Target:	14-3-3 gamma (YWHAG1)
Alternative Name:	14-3-3 gamma ( <a href="#">YWHAG1 Products</a> )

## Target Details

Background:	1433G, 143G, KCIP-1, Protein kinase C inhibitor protein-1, YWHAG, gamma polypeptide,
Molecular Weight:	28kDa
UniProt:	<a href="#">P61981</a>
Pathways:	<a href="#">Myometrial Relaxation and Contraction, M Phase</a>

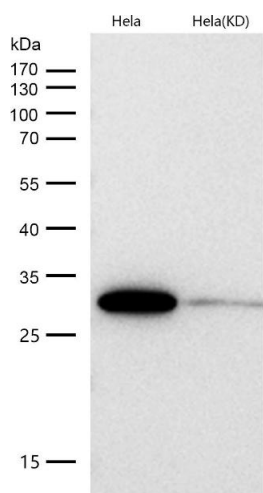
## Application Details

Application Notes:	WB 1:1000~1:2000 FC 1:50
Restrictions:	For Research Use only

## Handling

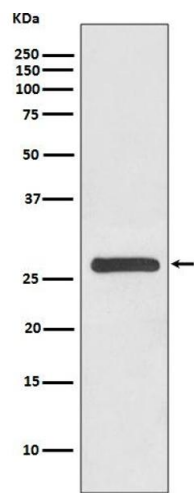
Buffer:	phosphate buffered saline , pH 7.4, 150 mM NaCl, 0.02 % sodium azide and 50 % glycerol.
Preservative:	Sodium azide
Precaution of Use:	This product contains Sodium azide: a POISONOUS AND HAZARDOUS SUBSTANCE which should be handled by trained staff only.
Storage:	4 °C,-20 °C
Storage Comment:	Store at +4°C short term. Store at -20°C long term. Avoid freeze / thaw cycle.

## Images



### Western Blotting

**Image 1.** All lanes use the Antibody at 1:1K dilution for 1 hour at room temperature. Induce target protein conformational changes that modify target protein function. Distinct temporal and spatial expression patterns of 14-3-3 isoforms have been observed in development and in acute response to extracellular signals and drugs, suggesting that 14-3-3 isoforms may perform different functions despite their sequence similarities.



Western Blotting

**Image 2.** Western blot analysis of 14-3-3 gamma expression in HeLa cell lysate.