

Datasheet for ABIN7606960

Recombinant anti-Calcineurin A antibody[Go to Product page](#)**2** Images

Overview

Quantity:	100 µL
Target:	Calcineurin A (CAN)
Reactivity:	Human, Mouse, Rat
Host:	Rabbit
Antibody Type:	Recombinant Antibody
Clonality:	Monoclonal
Conjugate:	This Calcineurin A antibody is un-conjugated
Application:	Western Blotting (WB), Immunocytochemistry (ICC), Flow Cytometry (FACS), Immunofluorescence (IF)

Product Details

Purpose:	Calcineurin A Rabbit mAb
Immunogen:	A synthesized peptide derived from human Calcineurin A
Isotype:	IgG
Specificity:	Calcineurin A Antibody detects endogenous levels of total Calcineurin A
Purification:	Affinity-chromatography
Grade:	KD Validated

Target Details

Target:	Calcineurin A (CAN)
---------	---------------------

Target Details

Alternative Name:	Calcineurin A (CAN Products)
Background:	Calcineurin A1, CalcineurinA, CALN, CALNA 1, CALNA, CALNA1, CAM PRP, CNA alpha, CCN1,
Molecular Weight:	59kDa
UniProt:	Q08209

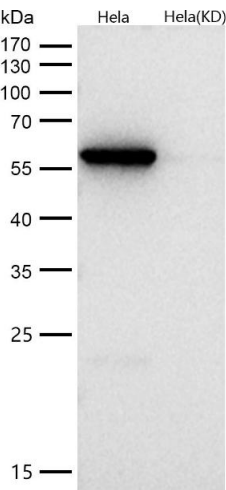
Application Details

Application Notes:	WB 1:500~1:2000 ICC/IF 1:50~1:200 FC 1:50
Restrictions:	For Research Use only

Handling

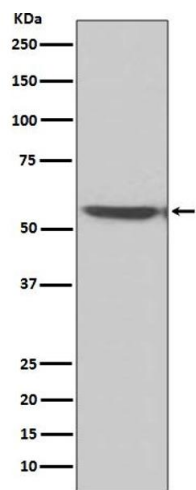
Buffer:	phosphate buffered saline , pH 7.4, 150 mM NaCl, 0.02 % sodium azide and 50 % glycerol.
Preservative:	Sodium azide
Precaution of Use:	This product contains Sodium azide: a POISONOUS AND HAZARDOUS SUBSTANCE which should be handled by trained staff only.
Storage:	4 °C,-20 °C
Storage Comment:	Store at +4°C short term. Store at -20°C long term. Avoid freeze / thaw cycle.

Images



Western Blotting

Image 1. All lanes use the Antibody at 1:1K dilution for 1 hour at room temperature. Calcineurin, also known as protein phosphatase 2B (PP2B), is a calmodulin-dependent, calcium-activated, serine/threonine protein phosphatase composed of a catalytic subunit (calcineurin A) and a tightly bound regulatory subunit (calcineurin B). Calcium-dependent, calmodulin-stimulated protein phosphatase. This subunit may have a role in the calmodulin activation of calcineurin. Dephosphorylates DNM1L, HSPB1 and SSH1.



Western Blotting

Image 2. Western blot analysis of Calcineurin A expression in A431 cell lysate.