

Datasheet for ABIN7606980

Recombinant anti-KIF11 antibody[Go to Product page](#)**1** Image

Overview

Quantity:	100 µL
Target:	KIF11
Reactivity:	Human
Host:	Rabbit
Antibody Type:	Recombinant Antibody
Clonality:	Monoclonal
Conjugate:	This KIF11 antibody is un-conjugated
Application:	Western Blotting (WB), Immunofluorescence (IF), Immunoprecipitation (IP), Immunocytochemistry (ICC)

Product Details

Purpose:	Eg5 Rabbit mAb
Immunogen:	A synthesized peptide derived from human Eg5
Isotype:	IgG
Specificity:	Eg5 Antibody detects endogenous levels of total Eg5
Purification:	Affinity-chromatography
Grade:	KD Validated

Target Details

Target:	KIF11
---------	-------

Target Details

Alternative Name:	Eg5 (KIF11 Products)
Background:	EG5, HKSP, Kinesin family member 11, Kinesin like protein 1, Kinesin-like protein KIF11, KNSL1, MCLMR, TR-interacting protein 5, TRIP5,
Molecular Weight:	119kDa
UniProt:	P52732

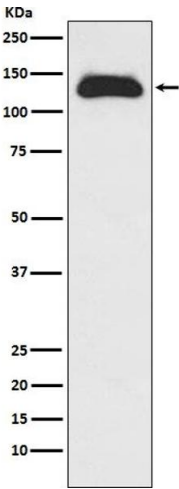
Application Details

Application Notes:	WB 1:500~1:2000 ICC/IF 1:50~1:200 IP 1:50
Restrictions:	For Research Use only

Handling

Buffer:	phosphate buffered saline , pH 7.4, 150 mM NaCl, 0.02 % sodium azide and 50 % glycerol.
Preservative:	Sodium azide
Precaution of Use:	This product contains Sodium azide: a POISONOUS AND HAZARDOUS SUBSTANCE which should be handled by trained staff only.
Storage:	4 °C,-20 °C
Storage Comment:	Store at +4°C short term. Store at -20°C long term. Avoid freeze / thaw cycle.

Images



Western Blotting

Image 1. Western blot analysis of Eg5 expression in Raji cell lysate.