

Datasheet for ABIN7606996

Recombinant anti-Exportin 2 antibody[Go to Product page](#)**2** Images

Overview

Quantity:	100 µL
Target:	Exportin 2 (CSE1L)
Reactivity:	Human, Mouse
Host:	Rabbit
Antibody Type:	Recombinant Antibody
Clonality:	Monoclonal
Conjugate:	This Exportin 2 antibody is un-conjugated
Application:	Western Blotting (WB), Immunofluorescence (IF), Immunohistochemistry (IHC), Immunocytochemistry (ICC), Flow Cytometry (FACS)

Product Details

Purpose:	Exportin2 Rabbit mAb
Immunogen:	A synthesized peptide derived from human Exportin2
Isotype:	IgG
Specificity:	Exportin2 Antibody detects endogenous levels of total Exportin2
Purification:	Affinity-chromatography
Grade:	KD Validated

Target Details

Target:	Exportin 2 (CSE1L)
---------	--------------------

Target Details

Alternative Name:	Exportin2 (CSE1L Products)
Background:	CSE1L, CAS, CSE1, Exp2, Importin-alpha re-exporter, Exportin-2, XPO2,
Molecular Weight:	98kDa
UniProt:	P55060
Pathways:	Protein targeting to Nucleus

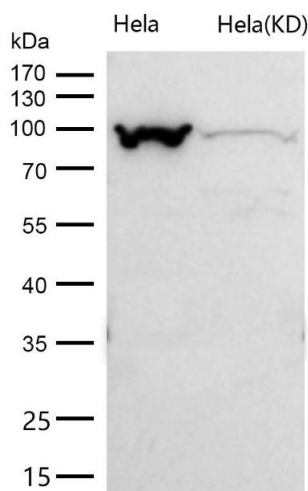
Application Details

Application Notes:	WB 1:500~1:2000 IHC 1:50~1:200 ICC/IF 1:50~1:200 FC 1:50
Restrictions:	For Research Use only

Handling

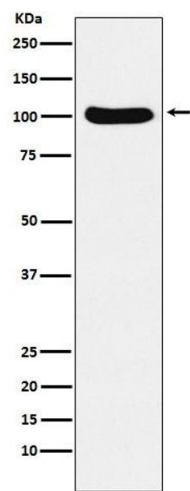
Buffer:	phosphate buffered saline , pH 7.4, 150 mM NaCl, 0.02 % sodium azide and 50 % glycerol.
Preservative:	Sodium azide
Precaution of Use:	This product contains Sodium azide: a POISONOUS AND HAZARDOUS SUBSTANCE which should be handled by trained staff only.
Storage:	4 °C,-20 °C
Storage Comment:	Store at +4°C short term. Store at -20°C long term. Avoid freeze / thaw cycle.

Images



Western Blotting

Image 1. All lanes use the Antibody at 1:1K dilution for 1 hour at room temperature. Export receptor for importin-alpha. Mediates importin-alpha re-export from the nucleus to the cytoplasm after import substrates (cargos) have been released into the nucleoplasm. In the nucleus binds cooperatively to importin-alpha and to the GTPase Ran in its active GTP-bound form.



Western Blotting

Image 2. Western blot analysis of Cellular Apoptosis Susceptibility expression in Ramos cell lysate.