

Datasheet for ABIN7607000

**Recombinant anti-APPL1 antibody**[Go to Product page](#)**2** Images

## Overview

Quantity:	100 µL
Target:	APPL1
Reactivity:	Human, Mouse, Rat
Host:	Rabbit
Antibody Type:	Recombinant Antibody
Clonality:	Monoclonal
Conjugate:	This APPL1 antibody is un-conjugated
Application:	Western Blotting (WB), Immunohistochemistry (IHC), Immunofluorescence (IF), Immunocytochemistry (ICC)

## Product Details

Purpose:	APPL Rabbit mAb
Immunogen:	A synthesized peptide derived from human APPL
Isotype:	IgG
Specificity:	APPL Antibody detects endogenous levels of total APPL
Purification:	Affinity-chromatography
Grade:	KD Validated

## Target Details

Target:	APPL1
---------	-------

## Target Details

Alternative Name:	APPL (APPL1 Products)
Background:	DIP13 alpha, DP13A, KIAA1428, APPL1, Dip13-alpha, Adapter protein containing PH domain, DCC-interacting protein 13-alpha,
Molecular Weight:	85kDa
UniProt:	<a href="#">Q9UKG1</a>

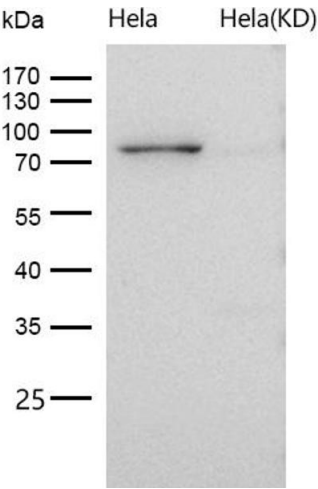
## Application Details

Application Notes:	WB 1:500~1:2000 IHC 1:50~1:200 ICC/IF 1:100~1:200
Restrictions:	For Research Use only

## Handling

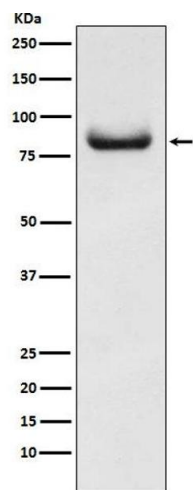
Buffer:	phosphate buffered saline , pH 7.4, 150 mM NaCl, 0.02 % sodium azide and 50 % glycerol.
Preservative:	Sodium azide
Precaution of Use:	This product contains Sodium azide: a POISONOUS AND HAZARDOUS SUBSTANCE which should be handled by trained staff only.
Storage:	4 °C,-20 °C
Storage Comment:	Store at +4°C short term. Store at -20°C long term. Avoid freeze / thaw cycle.

## Images



### Western Blotting

**Image 1.** All lanes use the Antibody at 1:1K dilution for 1 hour at room temperature. Adapter protein that interacts with proteins involved in different cellular signaling pathways. Required for the regulation of cell proliferation in response to extracellular signals from an early endosomal compartment. Links Rab5 to nuclear signal transduction. Involved in the regulation of the insulin receptor signaling pathway.



### Western Blotting

**Image 2.** Western blot analysis of APPL expression in HeLa cell lysate.