

Datasheet for ABIN7607002

Recombinant anti-ARHGEF2 antibody[Go to Product page](#)**2** Images

Overview

Quantity:	100 µL
Target:	ARHGEF2
Reactivity:	Human, Mouse, Rat
Host:	Rabbit
Antibody Type:	Recombinant Antibody
Clonality:	Monoclonal
Conjugate:	This ARHGEF2 antibody is un-conjugated
Application:	Western Blotting (WB), Immunofluorescence (IF), Immunocytochemistry (ICC), Flow Cytometry (FACS)

Product Details

Purpose:	GEF H1 Rabbit mAb
Immunogen:	A synthesized peptide derived from human GEF H1
Isotype:	IgG
Specificity:	GEF H1 Antibody detects endogenous levels of total GEF H1
Purification:	Affinity-chromatography
Grade:	KD Validated

Target Details

Target:	ARHGEF2
---------	---------

Target Details

Alternative Name:	GEF H1 (ARHGEF2 Products)
Background:	ARHG2, ARHGEF2, GEF, GEFH1, Lbcl1, Lfc, LFP40,
Molecular Weight:	112kDa
UniProt:	Q92974
Pathways:	Negative Regulation of intrinsic apoptotic Signaling

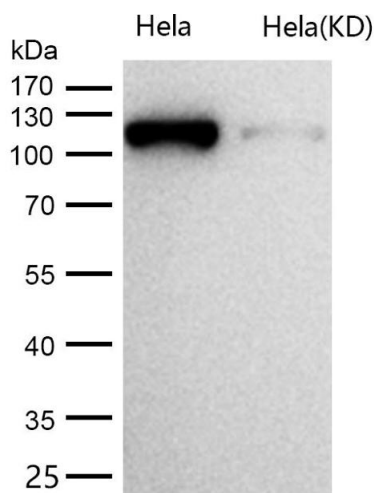
Application Details

Application Notes:	WB 1:500~1:2000 ICC/IF 1:50~1:200 FC 1:60
Restrictions:	For Research Use only

Handling

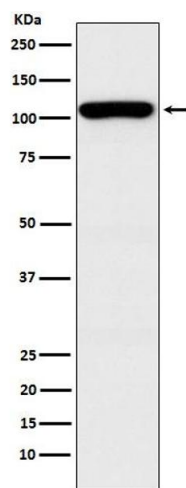
Buffer:	phosphate buffered saline , pH 7.4, 150 mM NaCl, 0.02 % sodium azide and 50 % glycerol.
Preservative:	Sodium azide
Precaution of Use:	This product contains Sodium azide: a POISONOUS AND HAZARDOUS SUBSTANCE which should be handled by trained staff only.
Storage:	4 °C,-20 °C
Storage Comment:	Store at +4°C short term. Store at -20°C long term. Avoid freeze / thaw cycle.

Images



Western Blotting

Image 1. All lanes use the Antibody at 1:1K dilution for 1 hour at room temperature. Activates Rho-GTPases by promoting the exchange of GDP for GTP. May be involved in epithelial barrier permeability, cell motility and polarization, dendritic spine morphology, antigen presentation, leukemic cell differentiation, cell cycle regulation, and cancer.



Western Blotting

Image 2. Western blot analysis of GEF H1 expression in HEK293 cell lysate.