

Datasheet for ABIN7607010

Recombinant anti-BCAP31 antibody[Go to Product page](#)**2** Images

Overview

Quantity:	100 µL
Target:	BCAP31
Reactivity:	Human, Mouse
Host:	Rabbit
Antibody Type:	Recombinant Antibody
Clonality:	Monoclonal
Conjugate:	This BCAP31 antibody is un-conjugated
Application:	Western Blotting (WB), Immunohistochemistry (IHC), Immunofluorescence (IF), Flow Cytometry (FACS), Immunocytochemistry (ICC)

Product Details

Purpose:	BAP31 Rabbit mAb
Immunogen:	A synthesized peptide derived from human BAP31
Isotype:	IgG
Specificity:	BAP31 Antibody detects endogenous levels of total BAP31
Purification:	Affinity-chromatography
Grade:	KD Validated

Target Details

Target:	BCAP31
---------	--------

Target Details

Alternative Name:	BAP31 (BCAP31 Products)
Background:	BCR-associated protein Bap31, p28 Bap31, Protein CDM,
Molecular Weight:	25kDa
UniProt:	P51572
Pathways:	Positive Regulation of Endopeptidase Activity

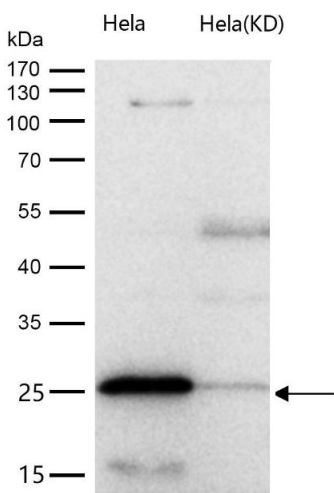
Application Details

Application Notes:	WB 1:500~1:2000 IHC 1:50~1:200 ICC/IF 1:50~1:200 FC 1:100
Restrictions:	For Research Use only

Handling

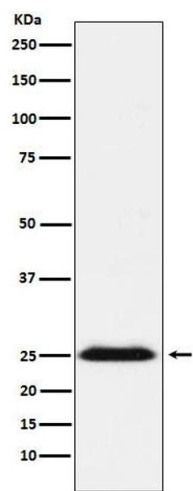
Buffer:	phosphate buffered saline , pH 7.4, 150 mM NaCl, 0.02 % sodium azide and 50 % glycerol.
Preservative:	Sodium azide
Precaution of Use:	This product contains Sodium azide: a POISONOUS AND HAZARDOUS SUBSTANCE which should be handled by trained staff only.
Storage:	4 °C,-20 °C
Storage Comment:	Store at +4°C short term. Store at -20°C long term. Avoid freeze / thaw cycle.

Images



Western Blotting

Image 1. All lanes use the Antibody at 1:1K dilution for 1 hour at room temperature. May play a role in anterograde transport of membrane proteins from the endoplasmic reticulum to the Golgi. May be involved in CASP8-mediated apoptosis.



Western Blotting

Image 2. Western blot analysis of BAP31 expression in NCCIT cell lysate.