

Datasheet for ABIN7607022

**Recombinant anti-MCM3 antibody**[Go to Product page](#)**1** Image

## Overview

Quantity:	100 µL
Target:	MCM3
Reactivity:	Human, Mouse, Rat
Host:	Rabbit
Antibody Type:	Recombinant Antibody
Clonality:	Monoclonal
Conjugate:	This MCM3 antibody is un-conjugated
Application:	Western Blotting (WB), Immunohistochemistry (IHC), Immunofluorescence (IF), Immunocytochemistry (ICC), Flow Cytometry (FACS)

## Product Details

Purpose:	MCM3 Rabbit mAb
Immunogen:	A synthesized peptide derived from human MCM3
Isotype:	IgG
Specificity:	MCM3 Antibody detects endogenous levels of total MCM3
Purification:	Affinity-chromatography
Grade:	KD Validated

## Target Details

Target:	MCM3
---------	------

## Target Details

Alternative Name:	MCM3 ( <a href="#">MCM3 Products</a> )
Background:	MCM3, HCC5, P1-MCM3, P1.h, RLFB,
Molecular Weight:	100kDa
UniProt:	<a href="#">P25205</a>
Pathways:	<a href="#">DNA Damage Repair</a> , <a href="#">Mitotic G1-G1/S Phases</a> , <a href="#">DNA Replication</a> , <a href="#">Chromatin Binding</a> , <a href="#">Synthesis of DNA</a>

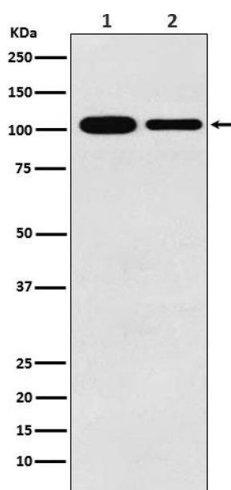
## Application Details

Application Notes:	WB 1:500~1:2000 IHC 1:50~1:200 ICC/IF 1:50~1:200 FC 1:50
Restrictions:	For Research Use only

## Handling

Buffer:	phosphate buffered saline , pH 7.4, 150 mM NaCl, 0.02 % sodium azide and 50 % glycerol.
Preservative:	Sodium azide
Precaution of Use:	This product contains Sodium azide: a POISONOUS AND HAZARDOUS SUBSTANCE which should be handled by trained staff only.
Storage:	4 °C,-20 °C
Storage Comment:	Store at +4°C short term. Store at -20°C long term. Avoid freeze / thaw cycle.

## Images



### Western Blotting

**Image 1.** Western blot analysis of MCM3 expression in (1) K562 cell lysate