

Datasheet for ABIN7607072

Recombinant anti-MUT antibody**2** Images[Go to Product page](#)

Overview

Quantity:	100 µL
Target:	MUT
Reactivity:	Mouse, Human, Rat
Host:	Rabbit
Antibody Type:	Recombinant Antibody
Clonality:	Monoclonal
Conjugate:	This MUT antibody is un-conjugated
Application:	Western Blotting (WB), Immunohistochemistry (IHC), Immunofluorescence (IF), Immunocytochemistry (ICC)

Product Details

Purpose:	MUTA Rabbit mAb
Immunogen:	A synthesized peptide derived from human MUTA
Isotype:	IgG
Specificity:	MUTA Antibody detects endogenous levels of total MUTA
Purification:	Affinity-chromatography
Grade:	KD Validated

Target Details

Target:	MUT
---------	-----

Target Details

Alternative Name:	Methylmalonyl-CoA mutase (MUT Products)
Background:	MCM, Methylmalonyl CoA isomerase, Mut,
Molecular Weight:	78kDa
UniProt:	P22033
Pathways:	Monocarboxylic Acid Catabolic Process

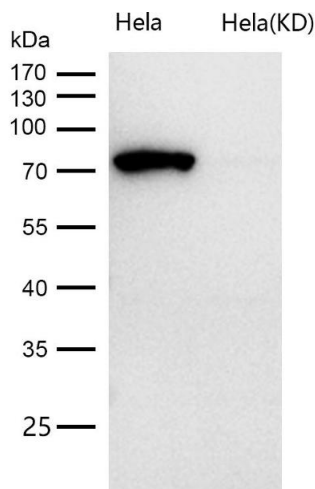
Application Details

Application Notes:	WB 1:500~1:2000 IHC 1:50~1:200 ICC/IF 1:50~1:200
Restrictions:	For Research Use only

Handling

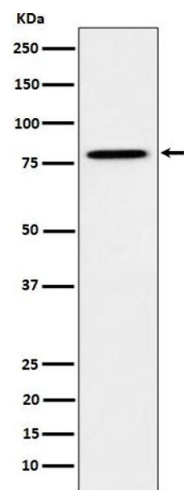
Buffer:	phosphate buffered saline , pH 7.4, 150 mM NaCl, 0.02 % sodium azide and 50 % glycerol.
Preservative:	Sodium azide
Precaution of Use:	This product contains Sodium azide: a POISONOUS AND HAZARDOUS SUBSTANCE which should be handled by trained staff only.
Storage:	4 °C,-20 °C
Storage Comment:	Store at +4°C short term. Store at -20°C long term. Avoid freeze / thaw cycle.

Images



Western Blotting

Image 1. All lanes use the Antibody at 1:1K dilution for 1 hour at room temperature. Involved in the degradation of several amino acids, odd-chain fatty acids and cholesterol via propionyl-CoA to the tricarboxylic acid cycle. MCM has different functions in other species.



Western Blotting

Image 2. Western blot analysis of MUTA expression in HeLa cell lysate.