

Datasheet for ABIN7607106

Recombinant anti-MBP antibody[Go to Product page](#)**2** Images

Overview

Quantity:	100 µL
Target:	MBP
Reactivity:	Human
Host:	Rabbit
Antibody Type:	Recombinant Antibody
Clonality:	Monoclonal
Conjugate:	This MBP antibody is un-conjugated
Application:	Western Blotting (WB)

Product Details

Purpose:	MLD Rabbit mAb
Immunogen:	A synthesized peptide derived from human MLD
Isotype:	IgG
Specificity:	MLD Antibody detects endogenous levels of total MLD
Purification:	Affinity-chromatography
Grade:	KD Validated

Target Details

Target:	MBP
Alternative Name:	MLD (MBP Products)

Target Details

Background:	DEGS 1, DEGS, DES1, FADS7, MIG15, MLD,
Molecular Weight:	34kDa
UniProt:	O15121

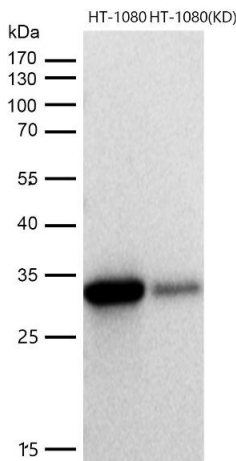
Application Details

Application Notes:	WB 1:500~1:2000
Restrictions:	For Research Use only

Handling

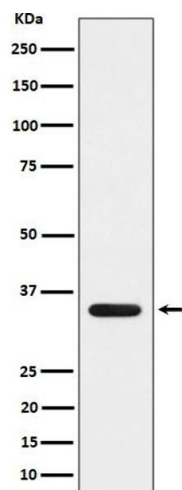
Buffer:	phosphate buffered saline , pH 7.4, 150 mM NaCl, 0.02 % sodium azide and 50 % glycerol.
Preservative:	Sodium azide
Precaution of Use:	This product contains Sodium azide: a POISONOUS AND HAZARDOUS SUBSTANCE which should be handled by trained staff only.
Storage:	4 °C,-20 °C
Storage Comment:	Store at +4°C short term. Store at -20°C long term. Avoid freeze / thaw cycle.

Images



Western Blotting

Image 1. All lanes use the Antibody at 1:1K dilution for 1 hour at room temperature. DEGS1 is a member of the membrane fatty acid desaturase family which is responsible for inserting double bonds into specific positions in fatty acids. It contains three His containing consensus motifs that are characteristic of a group of membrane fatty acid desaturases.



Western Blotting

Image 2. Western blot analysis of MLD expression in 293 cell lysate.