

Datasheet for ABIN7607108

Recombinant anti-PPM1G antibody[Go to Product page](#)**2** Images

Overview

Quantity:	100 µL
Target:	PPM1G
Reactivity:	Human, Rat
Host:	Rabbit
Antibody Type:	Recombinant Antibody
Clonality:	Monoclonal
Conjugate:	This PPM1G antibody is un-conjugated
Application:	Western Blotting (WB), Immunohistochemistry (IHC), Immunofluorescence (IF), Immunocytochemistry (ICC), Flow Cytometry (FACS)

Product Details

Purpose:	PPM1G Rabbit mAb
Immunogen:	A synthesized peptide derived from human PPM1G
Isotype:	IgG
Specificity:	PPM1G Antibody detects endogenous levels of total PPM1G
Purification:	Affinity-chromatography
Grade:	KD Validated

Target Details

Target:	PPM1G
---------	-------

Target Details

Alternative Name:	PPM1G (PPM1G Products)
Background:	PP2C, PP2C gamma, PP2CG, PPM1G, PPP2CG, Protein phosphatase 1C, Protein phosphatase 1G,
Molecular Weight:	75kDa
UniProt:	O15355

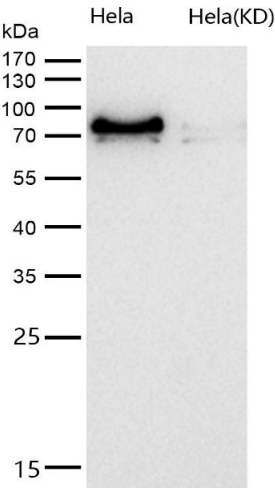
Application Details

Application Notes:	WB 1:500~1:2000 IHC 1:50~1:200 ICC/IF 1:50~1:200 FC 1:50
Restrictions:	For Research Use only

Handling

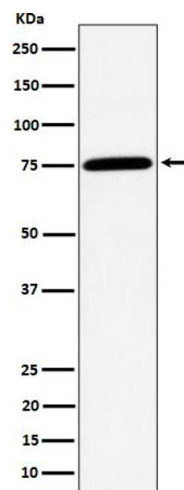
Buffer:	phosphate buffered saline , pH 7.4, 150 mM NaCl, 0.02 % sodium azide and 50 % glycerol.
Preservative:	Sodium azide
Precaution of Use:	This product contains Sodium azide: a POISONOUS AND HAZARDOUS SUBSTANCE which should be handled by trained staff only.
Storage:	4 °C,-20 °C
Storage Comment:	Store at +4°C short term. Store at -20°C long term. Avoid freeze / thaw cycle.

Images



Western Blotting

Image 1. All lanes use the Antibody at 1:1K dilution for 1 hour at room temperature. Belongs to the PP2C family.



Western Blotting

Image 2. Western blot analysis of PPM1G expression in Jurkat cell lysate.