

Datasheet for ABIN7607112

Recombinant anti-PSMB10 antibody[Go to Product page](#)**2** Images

Overview

Quantity:	100 µL
Target:	PSMB10
Reactivity:	Human, Mouse, Rat
Host:	Rabbit
Antibody Type:	Recombinant Antibody
Clonality:	Monoclonal
Conjugate:	This PSMB10 antibody is un-conjugated
Application:	Western Blotting (WB), Immunohistochemistry (IHC)

Product Details

Purpose:	PSMB10 Rabbit mAb
Immunogen:	A synthesized peptide derived from human PSMB10
Isotype:	IgG
Specificity:	PSMB10 Antibody detects endogenous levels of total PSMB10
Purification:	Affinity-chromatography
Grade:	KD Validated

Target Details

Target:	PSMB10
Alternative Name:	PSMB10 (PSMB10 Products)

Target Details

Background:	LMP10, MECL1, Psmb10,
Molecular Weight:	27kDa
UniProt:	P40306
Pathways:	Mitotic G1-G1/S Phases , DNA Replication , Synthesis of DNA

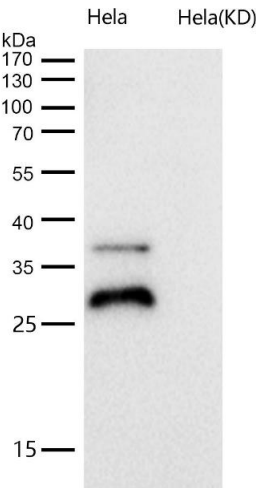
Application Details

Application Notes:	WB 1:500~1:2000 IHC 1:50~1:200
Restrictions:	For Research Use only

Handling

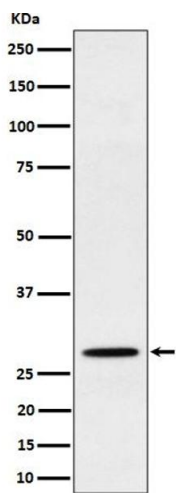
Buffer:	phosphate buffered saline , pH 7.4, 150 mM NaCl, 0.02 % sodium azide and 50 % glycerol.
Preservative:	Sodium azide
Precaution of Use:	This product contains Sodium azide: a POISONOUS AND HAZARDOUS SUBSTANCE which should be handled by trained staff only.
Storage:	4 °C,-20 °C
Storage Comment:	Store at +4°C short term. Store at -20°C long term. Avoid freeze / thaw cycle.

Images



Western Blotting

Image 1. All lanes use the Antibody at 1:1K dilution for 1 hour at room temperature. The proteasome is a multicatalytic proteinase complex which is characterized by its ability to cleave peptides with Arg, Phe, Tyr, Leu, and Glu adjacent to the leaving group at neutral or slightly basic pH . The proteasome has an ATP-dependent proteolytic activity. This subunit is involved in antigen processing to generate class I binding peptides.



Western Blotting

Image 2. Western blot analysis of PSMB10 expression in Raji cell lysate.