

Datasheet for ABIN760751  
**anti-ABI3 antibody (AA 151-250)**[Go to Product page](#)

## 2 Images

## Overview

Quantity:	100 µL
Target:	ABI3
Binding Specificity:	AA 151-250
Reactivity:	Human, Mouse
Host:	Rabbit
Clonality:	Polyclonal
Conjugate:	This ABI3 antibody is un-conjugated
Application:	ELISA, Western Blotting (WB), Immunohistochemistry (Frozen Sections) (IHC (fro)), Immunohistochemistry (Paraffin-embedded Sections) (IHC (p))

## Product Details

Immunogen:	KLH conjugated synthetic peptide derived from human ABI3
Isotype:	IgG
Cross-Reactivity:	Human, Mouse
Predicted Reactivity:	Rat,Dog,Cow,Sheep,Pig
Purification:	Purified by Protein A.

## Target Details

Target:	ABI3
Alternative Name:	Abi3 ( <a href="#">ABI3 Products</a> )

### Target Details

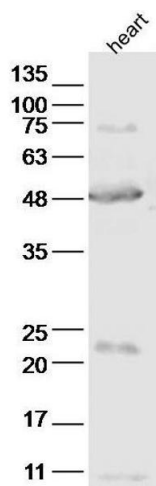
Background:	Synonyms: NESH, SSH3BP3, ABI gene family member 3, New molecule including SH3, ABI3 Background: May inhibit tumor metastasis (By similarity). In vitro, reduces cell motility.
Gene ID:	51225
UniProt:	<a href="#">Q9P2A4</a>

### Application Details

Application Notes:	WB 1:300-5000 ELISA 1:500-1000 IHC-P 1:200-400 IHC-F 1:100-500
Restrictions:	For Research Use only

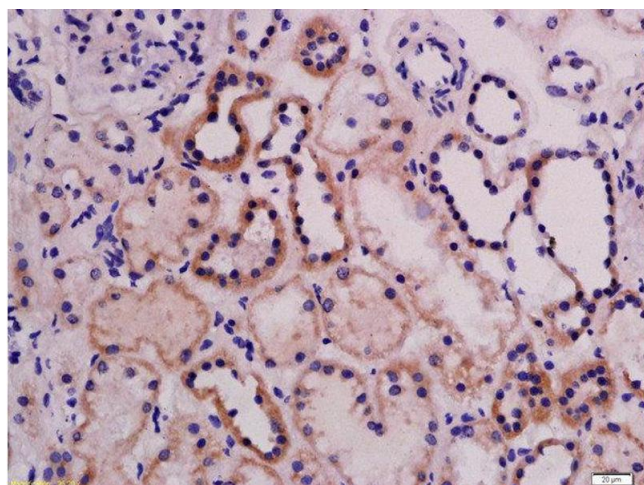
### Handling

Format:	Liquid
Concentration:	1 µg/µL
Buffer:	0.01M TBS( pH 7.4) with 1 % BSA, 0.02 % Proclin300 and 50 % Glycerol.
Preservative:	ProClin
Precaution of Use:	This product contains ProClin: a POISONOUS AND HAZARDOUS SUBSTANCE, which should be handled by trained staff only.
Storage:	4 °C,-20 °C
Storage Comment:	Shipped at 4°C. Store at -20°C for one year. Avoid repeated freeze/thaw cycles.
Expiry Date:	12 months



### Western Blotting

**Image 1.** Mouse heart lysates probed with ABI3 Polyclonal Antibody, unconjugated at 1:2000 overnight at 4°C followed by a conjugated secondary antibody for 60 minutes at 37°C.



### Immunohistochemistry (Paraffin-embedded Sections)

**Image 2.** Formalin-fixed and paraffin embedded rat kidney labeled with Rabbit Anti-ABI3 Polyclonal Antibody, Unconjugated at 1:200 followed by conjugation to the secondary antibody and DAB staining