

Datasheet for ABIN760766
anti-AIM2 antibody (AA 255-354)[Go to Product page](#)

2 Images

Overview

Quantity:	100 µL
Target:	AIM2
Binding Specificity:	AA 255-354
Reactivity:	Human, Mouse, Rat
Host:	Rabbit
Clonality:	Polyclonal
Conjugate:	This AIM2 antibody is un-conjugated
Application:	Western Blotting (WB), ELISA, Flow Cytometry (FACS), Immunofluorescence (Cultured Cells) (IF (cc)), Immunofluorescence (Paraffin-embedded Sections) (IF (p)), Immunohistochemistry (Paraffin-embedded Sections) (IHC (p)), Immunohistochemistry (Frozen Sections) (IHC (fro))

Product Details

Immunogen:	KLH conjugated synthetic peptide derived from mouse AIM2
Isotype:	IgG
Cross-Reactivity:	Human, Mouse, Rat
Purification:	Purified by Protein A.

Target Details

Target:	AIM2
Alternative Name:	Aim2 (AIM2 Products)

Target Details

Background:	<p>Synonyms: Gm1313, Ifi210, Interferon-inducible protein AIM2, Interferon-inducible protein 210, Ifi-210, Interferon-inducible protein p210, Aim2</p> <p>Background: Involved in innate immune response by recognizing cytosolic double-stranded DNA and inducing caspase-1-activating inflammasome formation in macrophages. Upon binding to DNA is thought to undergo oligomerization and to associate with PYCARD initiating the recruitment of caspase-1 precursor and processing of interleukin-1 beta and interleukin-18. Detects cytosolic dsDNA of viral and bacterial origin in a non-sequence-specific manner. Can also trigger PYCARD-dependent, caspase-1-independent cell death that involves caspase-8.</p>
Gene ID:	383619
UniProt:	Q91VJ1
Pathways:	Activation of Innate immune Response , Positive Regulation of Endopeptidase Activity , Inflammasome

Application Details

Application Notes:	<p>WB 1:300-5000</p> <p>ELISA 1:500-1000</p> <p>FCM 1:20-100</p> <p>IHC-P 1:200-400</p> <p>IHC-F 1:100-500</p> <p>IF(IHC-P) 1:50-200</p> <p>IF(IHC-F) 1:50-200</p> <p>IF(ICC) 1:50-200</p>
Restrictions:	For Research Use only

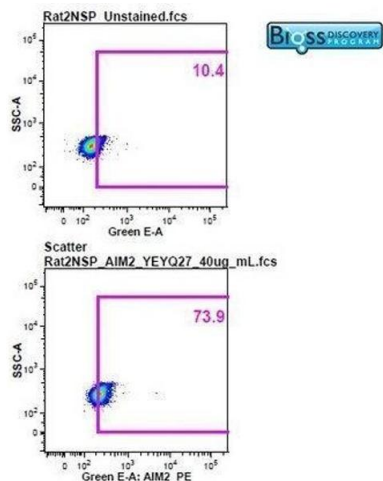
Handling

Format:	Liquid
Concentration:	1 µg/µL
Buffer:	0.01M TBS(pH 7.4) with 1 % BSA, 0.02 % Proclin300 and 50 % Glycerol.
Preservative:	ProClin
Precaution of Use:	This product contains ProClin: a POISONOUS AND HAZARDOUS SUBSTANCE, which should be handled by trained staff only.

Handling

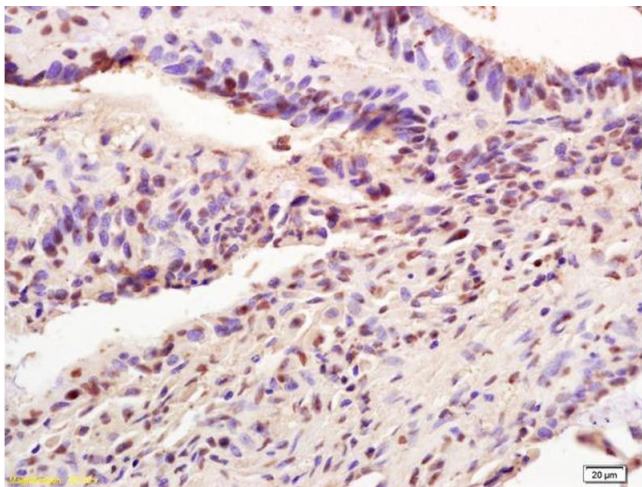
Storage:	4 °C,-20 °C
Storage Comment:	Shipped at 4°C. Store at -20°C for one year. Avoid repeated freeze/thaw cycles.
Expiry Date:	12 months

Images



Flow Cytometry

Image 1. Image was kindly submitted by a researcher at Duke University Medical Center. Rat splenocytes stained with Rabbit Anti-AIM2 Polyclonal Antibody, PE conjugated at 1:25.



Immunohistochemistry

Image 2. Formalin-fixed and paraffin embedded human colon carcinoma labeled with Rabbit Anti AIM2 Polyclonal Antibody, Unconjugated (ABIN760766) at 1:200 followed by conjugation to the secondary antibody and DAB staining