

Datasheet for ABIN761021  
**anti-EPB41L3 antibody**[Go to Product page](#)

## 1 Image

## Overview

Quantity:	100 µL
Target:	EPB41L3
Reactivity:	Human, Mouse, Rat
Host:	Rabbit
Clonality:	Polyclonal
Conjugate:	This EPB41L3 antibody is un-conjugated
Application:	Western Blotting (WB), ELISA

## Product Details

Immunogen:	KLH conjugated synthetic peptide derived from human DAL1/EPB41L3
Isotype:	IgG
Cross-Reactivity:	Human, Mouse, Rat
Predicted Reactivity:	Dog,Cow,Sheep,Pig,Horse,Chicken,Rabbit
Purification:	Purified by Protein A.

## Target Details

Target:	EPB41L3
Alternative Name:	Dal1 ( <a href="#">EPB41L3 Products</a> )
Background:	Optional[synonyms]: Differentially expressed in adenocarcinoma of the lung protein 1, 4.1B, Band 4.1 like protein 3, DAL 1, DAL1, EPB41L3, Erythrocyte membrane protein band 4.1 like 3,

## Target Details

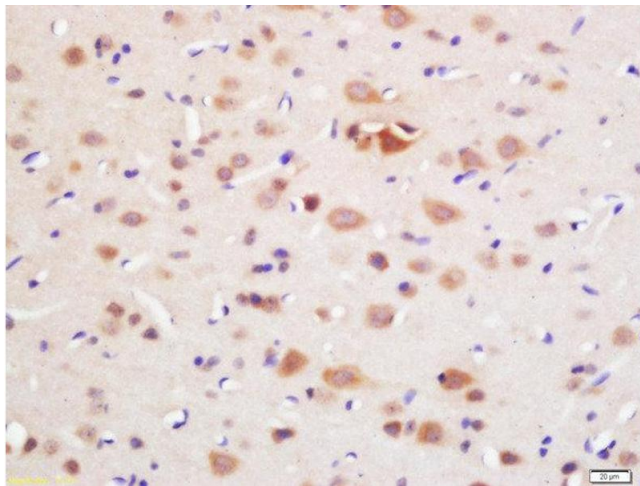
	HGNC:3380, KIAA0987, E41L3_HUMAN.
Gene ID:	23136
UniProt:	<a href="#">Q9Y2J2</a>
Pathways:	<a href="#">Cell-Cell Junction Organization</a> , <a href="#">Maintenance of Protein Location</a>

## Application Details

Application Notes:	WB: 1:100-1000, IHC-P: 1:100-500, IF(IHC-P): 1:50-200 Optimal working dilution should be determined by the investigator.
Restrictions:	For Research Use only

## Handling

Format:	Liquid
Concentration:	1 mg/mL
Buffer:	0.01M TBS( pH 7.4) with 1 % BSA, 0.02 % Proclin300 and 50 % Glycerol.
Preservative:	Sodium azide
Precaution of Use:	This product contains Sodium azide: a POISONOUS AND HAZARDOUS SUBSTANCE which should be handled by trained staff only.
Storage:	4 °C,-20 °C
Storage Comment:	Shipped at 4°C. Store at -20°C for one year. Avoid repeated freeze/thaw cycles.
Expiry Date:	12 months



#### Immunohistochemistry (Paraffin-embedded Sections)

**Image 1.** Formalin-fixed and paraffin embedded rat brain labeled with Rabbit Anti-DAL1 Polyclonal Antibody, Unconjugated (ABIN761021) at 1:200 followed by conjugation to the secondary antibody and DAB staining