



Datasheet for ABIN761186
anti-SMARCA1 antibody (AA 281-380)



[Go to Product page](#)

2 Images

Overview

Quantity:	100 µL
Target:	SMARCA1
Binding Specificity:	AA 281-380
Reactivity:	Human
Host:	Rabbit
Clonality:	Polyclonal
Conjugate:	This SMARCA1 antibody is un-conjugated
Application:	ELISA, Immunofluorescence (Cultured Cells) (IF (cc)), Immunofluorescence (Paraffin-embedded Sections) (IF (p)), Immunohistochemistry (Paraffin-embedded Sections) (IHC (p)), Immunohistochemistry (Frozen Sections) (IHC (fro))

Product Details

Immunogen:	KLH conjugated synthetic peptide derived from human SNF2L/SMARCA1
Isotype:	IgG
Cross-Reactivity:	Human
Predicted Reactivity:	Mouse,Rat,Cow,Pig,Horse,Chicken,Rabbit
Purification:	Purified by Protein A.

Target Details

Target:	SMARCA1
---------	---------

Target Details

Alternative Name: Snf2l ([SMARCA1 Products](#))

Background: Synonyms: global transcription activator homologous sequence, SMARCA1, SNF2-like 1, SNF2L, SNF2L1, SNF2LB, sucrose nonfermenting 2-like protein 1, SWI/SNF related matrix associated actin dependent regulator of chromatin subfamily a member 1, SWI2, SMCA1_HUMAN.

Background: SNF2L, also known as SMARCA1 (SWI/SNF related, matrix associated, actin dependent regulator of chromatin, subfamily a, member 1), SWI or ISWI, is a 1,054 amino acid protein that localizes to the nucleus and contains one helicase C-terminal domain, one helicase ATP-binding domain and two SANT domains. Expressed as multiple alternatively spliced isoforms, SNF2L exists as a component of the nucleosome-remodeling factor (NURF) complex where it helps to facilitate the ATP-dependent perturbation of chromatin structure and may also be involved in brain development and neurite outgrowth. The gene encoding SNF2L maps to human chromosome X, which contains nearly 153 million base pairs and houses over 1,000 genes.

Gene ID: 6594

Pathways: [Chromatin Binding](#)

Application Details

Application Notes: ELISA 1:500-1000
IHC-P 1:200-400
IHC-F 1:100-500
IF(IHC-P) 1:50-200
IF(IHC-F) 1:50-200
IF(ICC) 1:50-200

Restrictions: For Research Use only

Handling

Format: Liquid

Concentration: 1 µg/µL

Buffer: 0.01M TBS(pH 7.4) with 1 % BSA, 0.02 % Proclin300 and 50 % Glycerol.

Preservative: ProClin

Precaution of Use: This product contains ProClin: a POISONOUS AND HAZARDOUS SUBSTANCE, which should be

Handling

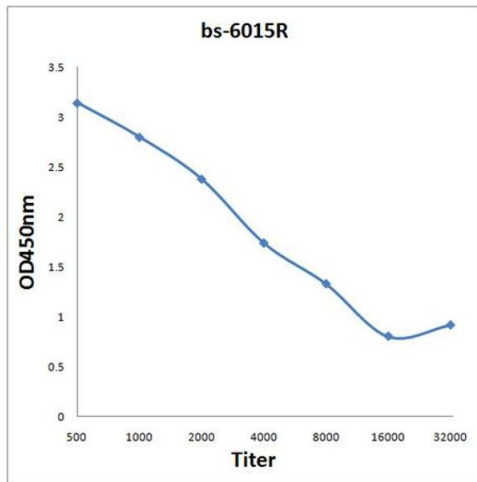
handled by trained staff only.

Storage: 4 °C,-20 °C

Storage Comment: Shipped at 4°C. Store at -20°C for one year. Avoid repeated freeze/thaw cycles.

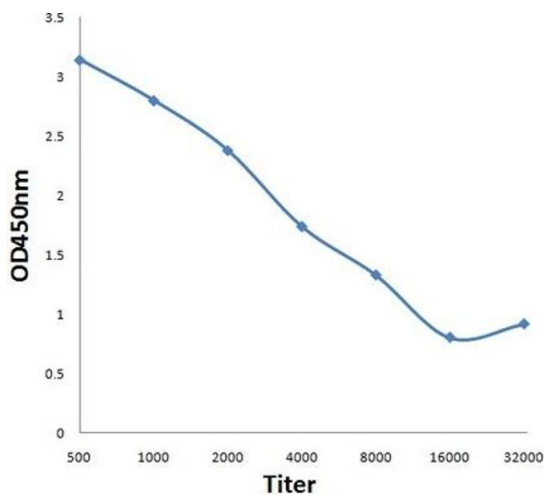
Expiry Date: 12 months

Images



ELISA

Image 1. Antigen: 0.2 µg/100 µL Primary: Antiserum, 1:500, 1:1000, 1:2000, 1:4000, 1:8000, 1:16000, 1:32000; Secondary: HRP conjugated Goat-Anti-Rabbit IgG at 1: 5000; TMB staining; Read the data in MicroplateReader by 450



ELISA

Image 2. Antigen: 0.2ug/100ul, Primary: Antiserum, 1:500, 1:1000, 1:2000, 1:4000, 1:8000, 1:16000, 1:32000, Secondary: HRP conjugated Goat-Anti-Rabbit IgG at 1: 5000, TMB staining, Read the data in MicroplateReader by 450nm