

Datasheet for ABIN761291  
**anti-CLMP antibody (AA 15-110)**[Go to Product page](#)

## 1 Image

## Overview

Quantity:	100 µL
Target:	CLMP
Binding Specificity:	AA 15-110
Reactivity:	Human
Host:	Rabbit
Clonality:	Polyclonal
Conjugate:	This CLMP antibody is un-conjugated
Application:	Western Blotting (WB), ELISA, Immunofluorescence (Cultured Cells) (IF (cc)), Immunofluorescence (Paraffin-embedded Sections) (IF (p)), Immunohistochemistry (Paraffin-embedded Sections) (IHC (p)), Immunocytochemistry (ICC), Immunohistochemistry (Frozen Sections) (IHC (fro))

## Product Details

Immunogen:	KLH conjugated synthetic peptide derived from human ASAM/ACAM
Isotype:	IgG
Cross-Reactivity:	Human
Predicted Reactivity:	Mouse,Rat,Dog,Cow,Sheep,Horse,Rabbit
Purification:	Purified by Protein A.

## Target Details

Target:	CLMP
---------	------

## Target Details

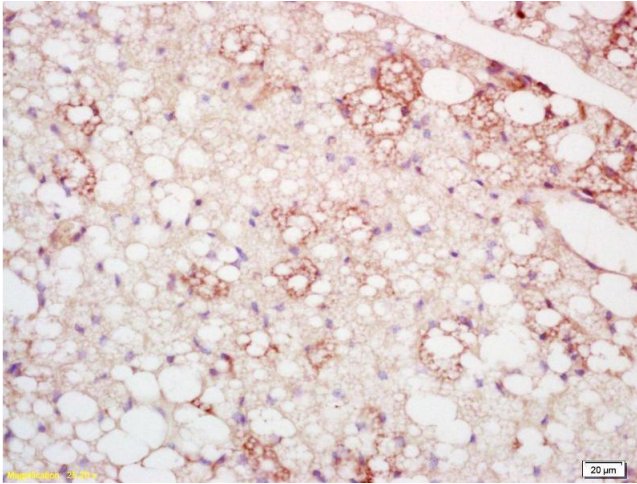
Alternative Name:	Asam ( <a href="#">CLMP Products</a> )
Background:	<p>Synonyms: ACAM, Adipocyte specic adhesion molecule, CAR like membrane protein, CLMP, Cocksackie and adenovirus receptor like membrane protein, CLMP_HUMAN.</p> <p>Background: The CTX family of proteins, including ASAM, are type I transmembrane proteins within the Ig superfamily that localize to junctional complexes between endothelial and epithelial cells and may play a role in cell-cell adhesion.</p>
Gene ID:	79827

## Application Details

Application Notes:	<p>WB 1:300-5000</p> <p>ELISA 1:500-1000</p> <p>IHC-P 1:200-400</p> <p>IHC-F 1:100-500</p> <p>IF(IHC-P) 1:50-200</p> <p>IF(IHC-F) 1:50-200</p> <p>IF(ICC) 1:50-200</p> <p>ICC 1:100-500</p>
Restrictions:	For Research Use only

## Handling

Format:	Liquid
Concentration:	1 µg/µL
Buffer:	0.01M TBS( pH 7.4) with 1 % BSA, 0.02 % Proclin300 and 50 % Glycerol.
Preservative:	ProClin
Precaution of Use:	This product contains ProClin: a POISONOUS AND HAZARDOUS SUBSTANCE, which should be handled by trained staff only.
Storage:	4 °C,-20 °C
Storage Comment:	Shipped at 4°C. Store at -20°C for one year. Avoid repeated freeze/thaw cycles.
Expiry Date:	12 months



#### Immunohistochemistry (Paraffin-embedded Sections)

**Image 1.** Paraformaldehyde-fixed, paraffin embedded Mouse kidney tissue, Antigen retrieval by boiling in sodium citrate buffer(pH6) for 15 minutes, Block endogenous peroxidase by 3% hydrogen peroxide for 30 minutes, Blocking buffer (normal goat serum) at 37°C for 20 minutes, Antibody incubation with ASAM Polyclonal Antibody, Unconjugated at 1:200 overnight at 4°C, followed by a conjugated secondary and DAB staining