

Datasheet for ABIN761351
anti-CADM1 antibody (AA 65-160)[Go to Product page](#)

3 Images

Overview

Quantity:	100 µL
Target:	CADM1
Binding Specificity:	AA 65-160
Reactivity:	Human, Mouse, Rat
Host:	Rabbit
Clonality:	Polyclonal
Conjugate:	This CADM1 antibody is un-conjugated
Application:	Western Blotting (WB), ELISA, Flow Cytometry (FACS), Immunohistochemistry (Paraffin-embedded Sections) (IHC (p)), Immunofluorescence (Cultured Cells) (IF (cc)), Immunofluorescence (Paraffin-embedded Sections) (IF (p)), Immunohistochemistry (Frozen Sections) (IHC (fro))

Product Details

Immunogen:	KLH conjugated synthetic peptide derived from human CADM1/TSLC1
Isotype:	IgG
Cross-Reactivity:	Human, Mouse, Rat
Predicted Reactivity:	Dog,Cow,Pig,Horse,Rabbit
Purification:	Purified by Protein A.

Target Details

Target:	CADM1
---------	-------

Target Details

Alternative Name:	Tslc1 (CADM1 Products)
Background:	<p>Synonyms: BL2, ST17, IGSF4, NECL2, RA175, TSLC1, IGSF4A, Necl-2, SYNCAM, sgIGSF, sTSLC-1, synCAM1, Cell adhesion molecule 1, Immunoglobulin superfamily member 4, Nectin-like protein 2, Spermatogenic immunoglobulin superfamily, Synaptic cell adhesion molecule, Tumor suppressor in lung cancer 1, TSLC-1, CADM1</p> <p>Background: Mediates homophilic cell-cell adhesion in a Ca(2+)-independent manner. Also mediates heterophilic cell-cell adhesion with CADM3 and PVRL3 in a Ca(2+)-independent manner. Acts as a tumor suppressor in non-small-cell lung cancer (NSCLC) cells. Interaction with CRTAM promotes natural killer (NK) cell cytotoxicity and interferon-gamma (IFN-gamma) secretion by CD8+ cells in vitro as well as NK cell-mediated rejection of tumors expressing CADM3 in vivo. May contribute to the less invasive phenotypes of lepidic growth tumor cells. In mast cells, may mediate attachment to and promote communication with nerves. CADM1, together with MITF, is essential for development and survival of mast cells in vivo. Acts as a synaptic cell adhesion molecule and plays a role in the formation of dendritic spines and in synapse assembly (By similarity). May be involved in neuronal migration, axon growth, pathfinding, and fasciculation on the axons of differentiating neurons. May play diverse roles in the spermatogenesis including in the adhesion of spermatocytes and spermatids to Sertoli cells and for their normal differentiation into mature spermatozoa.</p>
Gene ID:	23705
UniProt:	Q9BY67
Pathways:	Regulation of Leukocyte Mediated Immunity , Positive Regulation of Immune Effector Process , Cell-Cell Junction Organization , Activated T Cell Proliferation

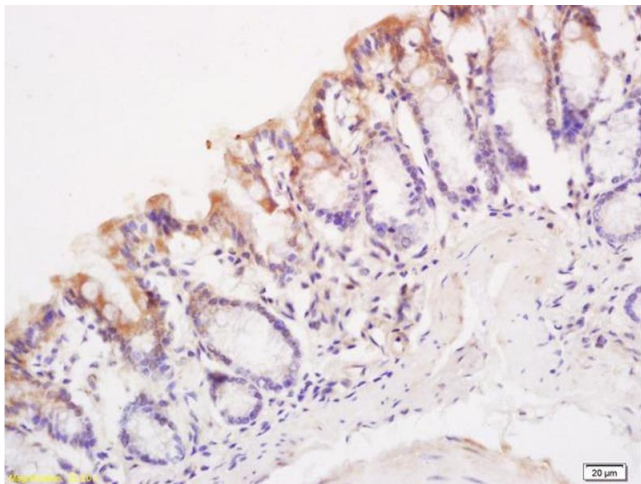
Application Details

Application Notes:	WB 1:300-5000 ELISA 1:500-1000 FCM 1:20-100 IHC-P 1:200-400 IHC-F 1:100-500 IF(IHC-P) 1:50-200 IF(IHC-F) 1:50-200 IF(ICC) 1:50-200
Restrictions:	For Research Use only

Handling

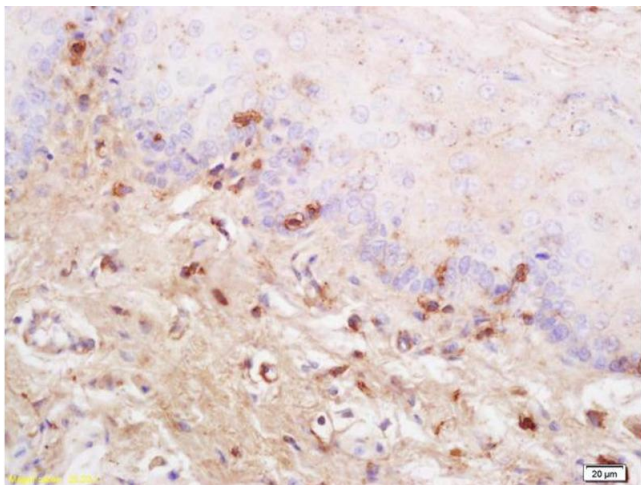
Format:	Liquid
Concentration:	1 µg/µL
Buffer:	0.01M TBS(pH 7.4) with 1 % BSA, 0.02 % Proclin300 and 50 % Glycerol.
Preservative:	ProClin
Precaution of Use:	This product contains ProClin: a POISONOUS AND HAZARDOUS SUBSTANCE, which should be handled by trained staff only.
Storage:	4 °C,-20 °C
Storage Comment:	Shipped at 4°C. Store at -20°C for one year. Avoid repeated freeze/thaw cycles.
Expiry Date:	12 months

Images



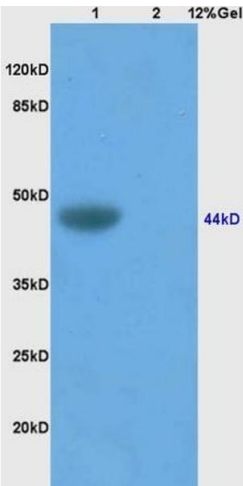
Immunohistochemistry

Image 1. Formalin-fixed and paraffin embedded mouse intestine labeled with Anti SynCAM/TSLC1 Polyclonal Antibody, Unconjugated (ABIN761351) at 1:200 followed by conjugation to the secondary antibody and DAB staining



Immunohistochemistry

Image 2. Formalin-fixed and paraffin embedded rat tongue labeled with Anti SynCAM/TSLC1 Polyclonal Antibody, Unconjugated (ABIN761351) at 1:200 followed by conjugation to the secondary antibody and DAB staining



SDS-PAGE

Image 3. Lane 1: mouse brain lysates Lane 2: human colon carcinoma lysates probed with Anti SynCAM/TSLC1 Polyclonal Antibody, Unconjugated (ABIN761351) at 1:200 in 4 °C. Followed by conjugation to secondary antibody at 1:3000 90min in 37 °C. Predicted band 44kD. Observed band size: 44kD.