

Datasheet for ABIN761381
anti-CD16a, CD16b (AA 131-230) antibody



[Go to Product page](#)

7 Images

1 Publication

Overview

Quantity:	100 µL
Target:	CD16a, CD16b
Binding Specificity:	AA 131-230
Reactivity:	Human, Mouse, Rat
Host:	Rabbit
Clonality:	Polyclonal
Conjugate:	Un-conjugated
Application:	Western Blotting (WB), Flow Cytometry (FACS), Immunofluorescence (Cultured Cells) (IF (cc)), Immunofluorescence (Paraffin-embedded Sections) (IF (p)), ELISA, Immunohistochemistry (Frozen Sections) (IHC (fro)), Immunohistochemistry (Paraffin-embedded Sections) (IHC (p))

Product Details

Immunogen:	KLH conjugated synthetic peptide derived from human CD16a
Isotype:	IgG
Cross-Reactivity:	Human, Mouse, Rat
Predicted Reactivity:	Cow, Sheep, Pig, Rabbit
Purification:	Purified by Protein A.

Target Details

Target:	CD16a, CD16b
---------	--------------

Target Details

Alternative Name:	CD16a/CD16b
Background:	Synonyms: CD16, FCG3, CD16A, FCGR3, IGFR3, IMD2, FCR-1, FCRIII, FCGRIII, FCRIIIA, Low affinity immunoglobulin gamma Fc region receptor III-A, CD16a antigen, Fc-gamma RIII-alpha, Fc-gamma RIII, Fc-gamma RIIIa, IgG Fc receptor III-2, FCGR3A, FCGR3B, CD16B, Background: Receptor for the Fc region of IgG. Binds complexed or aggregated IgG and also monomeric IgG. Mediates antibody-dependent cellular cytotoxicity (ADCC) and other antibody-dependent responses, such as phagocytosis.
Gene ID:	2214
UniProt:	P08637

Application Details

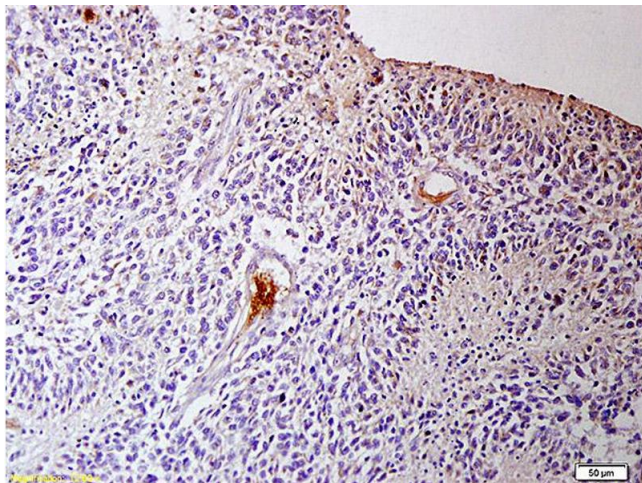
Application Notes:	WB 1:300-5000 ELISA 1:500-1000 FCM 1:20-100 IHC-P 1:200-400 IHC-F 1:100-500 IF(IHC-P) 1:50-200 IF(IHC-F) 1:50-200 IF(ICC) 1:50-200
Restrictions:	For Research Use only

Handling

Format:	Liquid
Concentration:	1 µg/µL
Buffer:	0.01M TBS(pH 7.4) with 1 % BSA, 0.02 % Proclin300 and 50 % Glycerol.
Preservative:	ProClin
Precaution of Use:	This product contains ProClin: a POISONOUS AND HAZARDOUS SUBSTANCE, which should be handled by trained staff only.
Storage:	4 °C, -20 °C
Storage Comment:	Shipped at 4°C. Store at -20°C for one year. Avoid repeated freeze/thaw cycles.
Expiry Date:	12 months

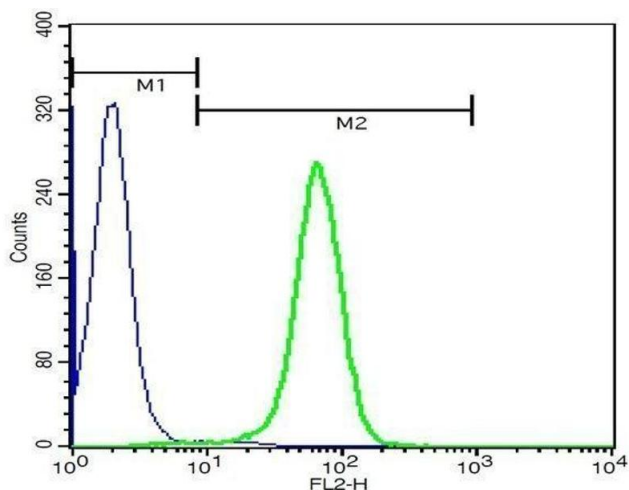
Product cited in: Ding, Wang, Wang, Yang, Xue: "Expression of Tumor-Associated Macrophage in Progression of Human Glioma." in: **Cell biochemistry and biophysics**, (2014) ([PubMed](#)).

Images



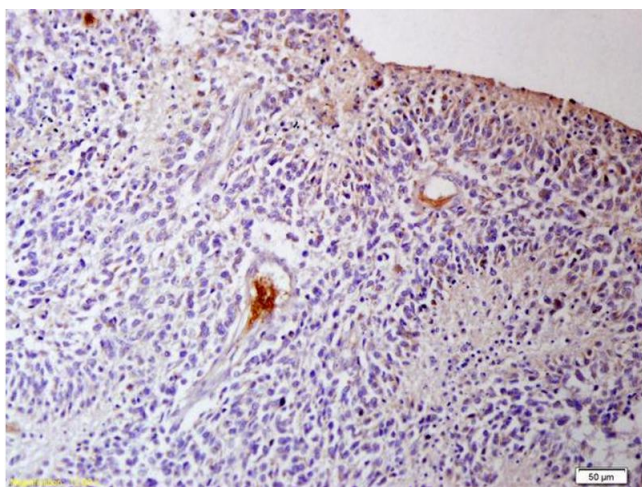
Immunohistochemistry

Image 1. Formalin-fixed and paraffin embedded mouse spleen labeled with Rabbit Anti IGFR3/CD16 Polyclonal Antibody, Unconjugated (ABIN761381) at 1:200 followed by conjugation to the secondary antibody and DAB staining



Flow Cytometry

Image 2. U937 cells probed with Rabbit Anti-CD16 Polyclonal Antibody .



Immunohistochemistry

Image 3. Formalin-fixed and paraffin embedded human glioma tissue labeled with Anti IGFR3/CD16 Polyclonal Antibody, Unconjugated (ABIN761381) at 1:200 followed by conjugation to the secondary antibody and DAB staining

Please check the [product details page](#) for more images. Overall 7 images are available for ABIN761381.