



[Go to Product page](#)

Datasheet for ABIN761606
anti-DLL4 antibody (AA 551-650)

1 Image

Overview

Quantity:	100 µL
Target:	DLL4
Binding Specificity:	AA 551-650
Reactivity:	Mouse
Host:	Rabbit
Clonality:	Polyclonal
Conjugate:	This DLL4 antibody is un-conjugated
Application:	ELISA, Immunohistochemistry (Paraffin-embedded Sections) (IHC (p)), Immunofluorescence (Cultured Cells) (IF (cc)), Immunofluorescence (Paraffin-embedded Sections) (IF (p)), Immunohistochemistry (Frozen Sections) (IHC (fro))

Product Details

Immunogen:	KLH conjugated synthetic peptide derived from human DLL4
Isotype:	IgG
Cross-Reactivity:	Mouse
Predicted Reactivity:	Human,Rat,Dog,Cow,Pig,Horse
Purification:	Purified by Protein A.

Target Details

Target:	DLL4
---------	------

Target Details

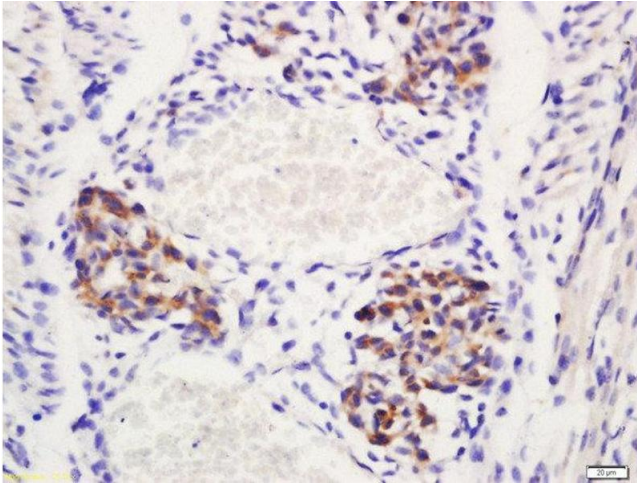
Alternative Name:	delta 4 (DLL4 Products)
Background:	Synonyms: hdelta2, Delta-like protein 4, Drosophila Delta homolog 4, Delta4, DLL4, UNQ1895/PRO4341 Background: Involved in the Notch signaling pathway as Notch ligand. Activates NOTCH1 and NOTCH4. Involved in angiogenesis, negatively regulates endothelial cell proliferation and migration and angiogenic sprouting. Essential for retinal progenitor proliferation is required for suppressing rod fates in late retinal progenitors as well as for proper generation of other retinal cell types. During spinal cord neurogenesis, inhibits V2a interneuron fate.
Gene ID:	54567
UniProt:	Q9NR61
Pathways:	Notch Signaling

Application Details

Application Notes:	ELISA 1:500-1000 IHC-P 1:200-400 IHC-F 1:100-500 IF(IHC-P) 1:50-200 IF(IHC-F) 1:50-200 IF(ICC) 1:50-200
Restrictions:	For Research Use only

Handling

Format:	Liquid
Concentration:	1 µg/µL
Buffer:	0.01M TBS(pH 7.4) with 1 % BSA, 0.02 % Proclin300 and 50 % Glycerol.
Preservative:	ProClin
Precaution of Use:	This product contains ProClin: a POISONOUS AND HAZARDOUS SUBSTANCE, which should be handled by trained staff only.
Storage:	4 °C,-20 °C
Storage Comment:	Shipped at 4°C. Store at -20°C for one year. Avoid repeated freeze/thaw cycles.
Expiry Date:	12 months



Immunohistochemistry (Paraffin-embedded Sections)

Image 1. Formalin-fixed and paraffin embedded mouse embryo labeled with Rabbit Anti-Delta 4 Polyclonal Antibody, Unconjugated (ABIN761606) at 1:200 followed by conjugation to the secondary antibody and DAB staining