

Datasheet for ABIN761711
anti-HPGD antibody (AA 55-160)[Go to Product page](#)

1 Image

2 Publications

Overview

Quantity:	100 µL
Target:	HPGD
Binding Specificity:	AA 55-160
Reactivity:	Human, Rat
Host:	Rabbit
Clonality:	Polyclonal
Conjugate:	This HPGD antibody is un-conjugated
Application:	Western Blotting (WB), ELISA, Immunohistochemistry (Paraffin-embedded Sections) (IHC (p)), Immunofluorescence (Cultured Cells) (IF (cc)), Immunofluorescence (Paraffin-embedded Sections) (IF (p)), Immunohistochemistry (Frozen Sections) (IHC (fro))

Product Details

Immunogen:	KLH conjugated synthetic peptide derived from human Prostaglandin dehydrogenase 1
Isotype:	IgG
Cross-Reactivity:	Human, Rat
Predicted Reactivity:	Mouse,Cow,Pig,Horse,Rabbit
Purification:	Purified by Protein A.

Target Details

Target:	HPGD
---------	------

Target Details

Alternative Name:	Prostaglandin Dehydrogenase 1 (HPGD Products)
Background:	<p>Synonyms: PGDH, PGDH1, PHOAR1, 15-PGDH, SDR36C1, 15-hydroxyprostaglandin dehydrogenase [NAD(+)], Prostaglandin dehydrogenase 1, HPGD</p> <p>Background: Prostaglandin inactivation. Contributes to the regulation of events that are under the control of prostaglandin levels. Catalyzes the NAD-dependent dehydrogenation of lipoxin A4 to form 15-oxo-lipoxin A4. Inhibits in vivo proliferation of colon cancer cells.</p>
Gene ID:	3248
UniProt:	P15428

Application Details

Application Notes:	<p>WB 1:300-5000</p> <p>ELISA 1:500-1000</p> <p>IHC-P 1:200-400</p> <p>IHC-F 1:100-500</p> <p>IF(IHC-P) 1:50-200</p> <p>IF(IHC-F) 1:50-200</p> <p>IF(ICC) 1:50-200</p>
Restrictions:	For Research Use only

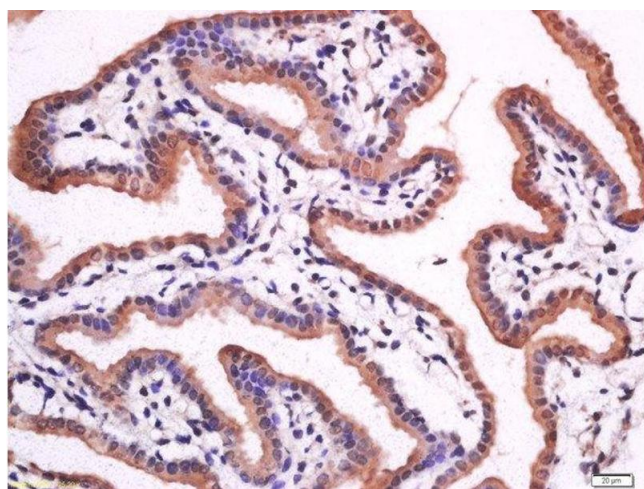
Handling

Format:	Liquid
Concentration:	1 µg/µL
Buffer:	0.01M TBS(pH 7.4) with 1 % BSA, 0.02 % Proclin300 and 50 % Glycerol.
Preservative:	ProClin
Precaution of Use:	This product contains ProClin: a POISONOUS AND HAZARDOUS SUBSTANCE, which should be handled by trained staff only.
Storage:	4 °C,-20 °C
Storage Comment:	Shipped at 4°C. Store at -20°C for one year. Avoid repeated freeze/thaw cycles.
Expiry Date:	12 months

Product cited in: Hu, Li, Maskey, Xu, Peng, Tian, Li, Yang: "15-PGDH expression as a predictive factor response to neoadjuvant chemotherapy in advanced gastric cancer." in: **International journal of clinical and experimental pathology**, Vol. 8, Issue 6, pp. 6910-8, (2015) ([PubMed](#)).

Wei, Yu, Shi, Zhang, Lian, Li, Shen, Xing, Zhu: "15-PGDH/15-KETE plays a role in hypoxia-induced pulmonary vascular remodeling through ERK1/2-dependent PAR-2 pathway." in: **Cellular signalling**, Vol. 26, Issue 7, pp. 1476-1488, (2014) ([PubMed](#)).

Images



Immunohistochemistry (Paraffin-embedded Sections)

Image 1. Paraformaldehyde-fixed, paraffin embedded mouse placenta, Antigen retrieval by boiling in sodium citrate buffer (pH6) for 15min, Block endogenous peroxidase by 3% hydrogen peroxide for 30 minutes, Blocking buffer (normal goat serum) at 37°C for 20min, Antibody incubation with Rabbit Anti-Prostaglandin dehydrogenase 1 Polyclonal Antibody, Unconjugated at 1:200 overnight at 4°C, followed by a conjugated secondary for 90 minutes and DAB staining.