

Datasheet for ABIN761786
anti-METTL11A antibody (AA 25-130)[Go to Product page](#)

1 Image

Overview

Quantity:	100 µL
Target:	METTL11A
Binding Specificity:	AA 25-130
Reactivity:	Mouse, Rat
Host:	Rabbit
Clonality:	Polyclonal
Conjugate:	This METTL11A antibody is un-conjugated
Application:	ELISA, Western Blotting (WB), Immunofluorescence (Cultured Cells) (IF (cc)), Immunofluorescence (Paraffin-embedded Sections) (IF (p)), Immunohistochemistry (Frozen Sections) (IHC (fro)), Immunohistochemistry (Paraffin-embedded Sections) (IHC (p))

Product Details

Immunogen:	KLH conjugated synthetic peptide derived from human METTL11A
Isotype:	IgG
Cross-Reactivity:	Mouse, Rat
Predicted Reactivity:	Human,Dog,Cow,Pig,Horse,Chicken
Purification:	Purified by Protein A.

Target Details

Target:	METTL11A
---------	----------

Target Details

Alternative Name:	Mettl11a (METTL11A Products)
Background:	<p>Synonyms: NRMT, NTM1A, AD-003, H0MT1A, C9orf32, METTL11A, N-terminal Xaa-Pro-Lys N-methyltransferase 1, Alpha N-terminal protein methyltransferase 1A, Methyltransferase-like protein 11A, N-terminal RCC1 methyltransferase, X-Pro-Lys N-terminal protein methyltransferase 1A, NTMT1, NRMT1</p> <p>Background: Distributive alpha-N-methyltransferase that methylates the N-terminus of target proteins containing the N-terminal motif [Ala/Pro/Ser]-Pro-Lys when the initiator Met is cleaved. Specifically catalyzes mono-, di- or tri-methylation of exposed alpha-amino group of Ala or Ser residue in the [Ala/Ser]-Pro-Lys motif and mono- or di-methylation of Pro in the Pro-Pro-Lys motif. Some of the substrates may be primed by METTL11B-mediated monomethylation. Responsible for the N-terminal methylation of KLHL31, MYL2, MYL3, RB1, RCC1, RPL23A and SET. Required during mitosis for normal bipolar spindle formation and chromosome segregation via its action on RCC1.</p>
Gene ID:	28989
UniProt:	Q9BV86

Application Details

Application Notes:	WB 1:300-5000 ELISA 1:500-1000 IHC-P 1:200-400 IHC-F 1:100-500 IF(IHC-P) 1:50-200 IF(IHC-F) 1:50-200 IF(ICC) 1:50-200
Restrictions:	For Research Use only
Handling	
Format:	Liquid
Concentration:	1 µg/µL
Buffer:	0.01M TBS(pH 7.4) with 1 % BSA, 0.02 % Proclin300 and 50 % Glycerol.
Preservative:	ProClin
Precaution of Use:	This product contains ProClin: a POISONOUS AND HAZARDOUS SUBSTANCE, which should be

Handling

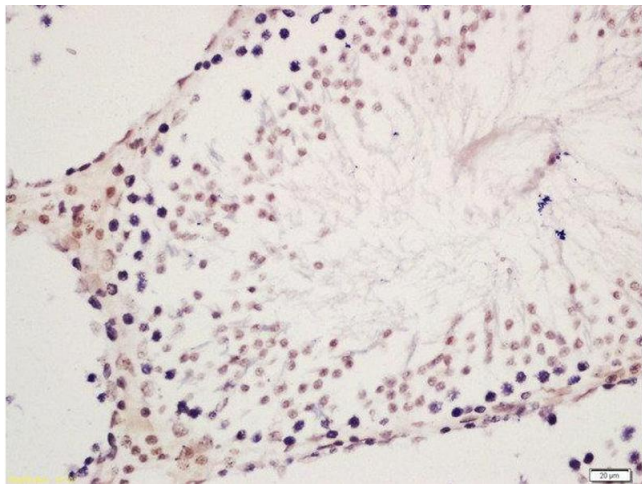
handled by trained staff only.

Storage: 4 °C, -20 °C

Storage Comment: Shipped at 4°C. Store at -20°C for one year. Avoid repeated freeze/thaw cycles.

Expiry Date: 12 months

Images



Immunohistochemistry (Paraffin-embedded Sections)

Image 1. Formalin-fixed and paraffin embedded rat testis labeled with Rabbit Anti-METTL11A Polyclonal Antibody, Unconjugated (ABIN761786) at 1:200 followed by conjugation to the secondary antibody and DAB staining