



[Go to Product page](#)

Datasheet for ABIN761951  
**anti-LEPREL2 antibody (AA 351-450)**

2 Images

Overview

|                      |   |
|----------------------|---|
| Quantity:            | 100 µL  |
| Target:              | LEPREL2   |
| Binding Specificity: | AA 351-450  |
| Reactivity:          | Rat   |
| Host:                | Rabbit  |
| Clonality:           | Polyclonal  |
| Conjugate:           | This LEPREL2 antibody is un-conjugated  |
| Application:         | ELISA, Immunofluorescence (Cultured Cells) (IF (cc)), Immunofluorescence (Paraffin-embedded Sections) (IF (p)), Immunohistochemistry (Frozen Sections) (IHC (fro)), Immunohistochemistry (Paraffin-embedded Sections) (IHC (p)) |

Product Details

|                       |   |
|-----------------------|---|
| Immunogen:            | KLH conjugated synthetic peptide derived from human LEPREL2 |
| Isotype:              | IgG   |
| Cross-Reactivity:     | Rat   |
| Predicted Reactivity: | Human,Mouse,Dog,Cow,Pig,Rabbit                              |
| Purification:         | Purified by Protein A.                                      |

Target Details

|         |         |
|---------|---------|
| Target: | LEPREL2 |
|---------|---------|

## Target Details

---

|                   |   |
|-------------------|---|
| Alternative Name: | Leprel2 ( <a href="#">LEPREL2 Products</a> )  |
| Background:       | Synonyms: B protein, gene rich cluster B, GRCB, HSU47926, leprecan like 2, leprecan like 2 protein, Leprecan like protein 2, P3H3, prolyl 3 hydroxylase 3.<br>Background: LEPREL2 belongs to a family of collagen prolyl hydroxylases required for proper collagen biosynthesis, folding, and assembly. |
| Gene ID:          | 10536   |

## Application Details

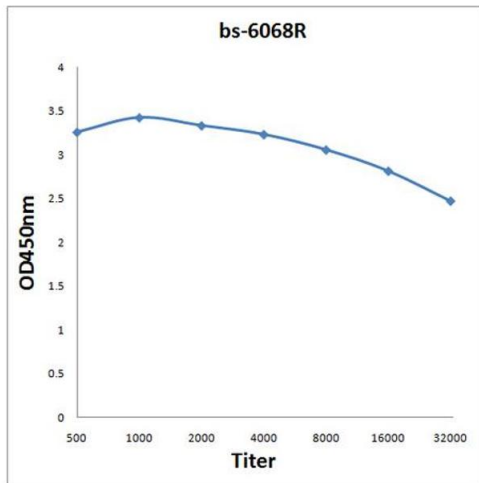
---

|                    |  |
|--------------------|--|
| Application Notes: | ELISA 1:500-1000<br>IHC-P 1:200-400<br>IHC-F 1:100-500<br>IF(IHC-P) 1:50-200<br>IF(IHC-F) 1:50-200<br>IF(ICC) 1:50-200 |
| Restrictions:      | For Research Use only  |

## Handling

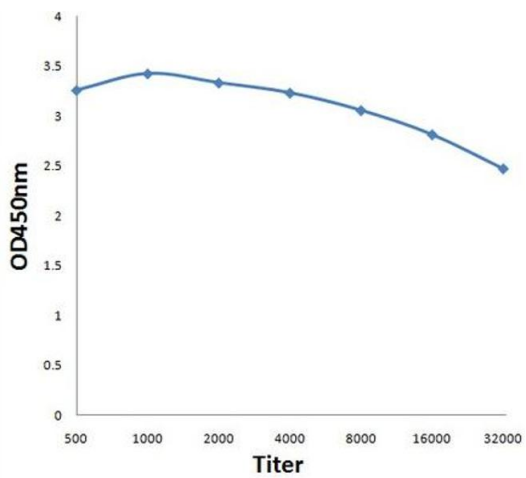
---

|                    |  |
|--------------------|--|
| Format:            | Liquid   |
| Concentration:     | 1 µg/µL  |
| Buffer:            | 0.01M TBS( pH 7.4) with 1 % BSA, 0.02 % Proclin300 and 50 % Glycerol.  |
| Preservative:      | ProClin  |
| Precaution of Use: | This product contains ProClin: a POISONOUS AND HAZARDOUS SUBSTANCE, which should be handled by trained staff only. |
| Storage:           | 4 °C,-20 °C  |
| Storage Comment:   | Shipped at 4°C. Store at -20°C for one year. Avoid repeated freeze/thaw cycles.                                    |
| Expiry Date:       | 12 months  |



**ELISA**

**Image 1.** Antigen: 0.2 µg/100 µL Primary: Antiserum, 1:500, 1:1000, 1:2000, 1:4000, 1:8000, 1:16000, 1:32000; Secondary: HRP conjugated Goat Anti-Rabbit IgG at 1: 5000; TMB staining; Read the data in Microplate Reader by 450nm



**ELISA**

**Image 2.** Antigen: 0.2ug/100ul, Primary: Antiserum, 1:500, 1:1000, 1:2000, 1:4000, 1:8000, 1:16000, 1:32000, Secondary: HRP conjugated Goat Anti-Rabbit IgG at 1: 5000, TMB staining Read the data in Microplate Reader by 450nm,