

Datasheet for ABIN761966
anti-LLGL1 antibody (AA 801-900)

2 Images

[Go to Product page](#)

Overview

Quantity:	100 µL
Target:	LLGL1
Binding Specificity:	AA 801-900
Reactivity:	Rat
Host:	Rabbit
Clonality:	Polyclonal
Conjugate:	This LLGL1 antibody is un-conjugated
Application:	ELISA, Western Blotting (WB), Immunofluorescence (Paraffin-embedded Sections) (IF (p)), Immunohistochemistry (Frozen Sections) (IHC (fro)), Immunohistochemistry (Paraffin-embedded Sections) (IHC (p)), Immunofluorescence (Cultured Cells) (IF (cc))

Product Details

Immunogen:	KLH conjugated synthetic peptide derived from human LLGL1
Isotype:	IgG
Cross-Reactivity:	Rat
Predicted Reactivity:	Human,Mouse,Dog,Cow,Horse
Purification:	Purified by Protein A.

Target Details

Target:	LLGL1
---------	-------

Target Details

Alternative Name:	Llgl1 (LLGL1 Products)
Sub Type:	Cocktail
Background:	<p>Synonyms: DLG4, HUGL, LLGL, HUGL1, HUGL-1, Lethal(2) giant larvae protein homolog 1, Human homolog to the D-Igl gene protein, LLGL1</p> <p>Background: Cortical cytoskeleton protein found in a complex involved in maintaining cell polarity and epithelial integrity. Involved in the regulation of mitotic spindle orientation, proliferation, differentiation and tissue organization of neuroepithelial cells. Involved in axonogenesis through RAB10 activation thereby regulating vesicular membrane trafficking toward the axonal plasma membrane.</p>
Gene ID:	3996
UniProt:	Q15334
Pathways:	WNT Signaling

Application Details

Application Notes:	WB 1:300-5000 ELISA 1:500-1000 IHC-P 1:200-400 IHC-F 1:100-500 IF(IHC-P) 1:50-200 IF(IHC-F) 1:50-200 IF(ICC) 1:50-200
Restrictions:	For Research Use only

Handling

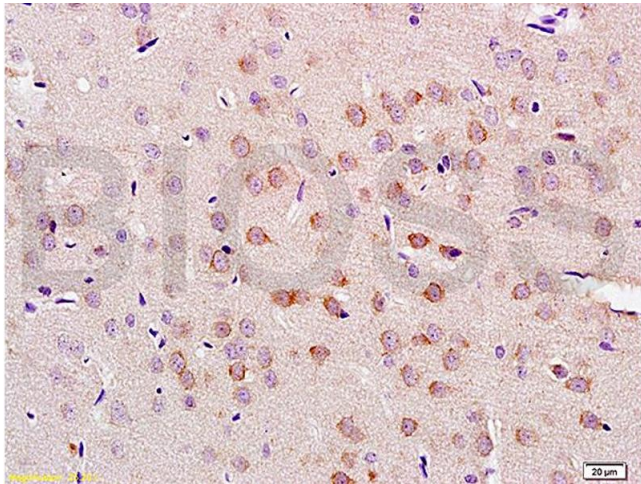
Format:	Liquid
Concentration:	1 µg/µL
Buffer:	0.01M TBS(pH 7.4) with 1 % BSA, 0.02 % Proclin300 and 50 % Glycerol.
Preservative:	ProClin
Precaution of Use:	This product contains ProClin: a POISONOUS AND HAZARDOUS SUBSTANCE, which should be handled by trained staff only.
Storage:	4 °C,-20 °C

Handling

Storage Comment: Shipped at 4°C. Store at -20°C for one year. Avoid repeated freeze/thaw cycles.

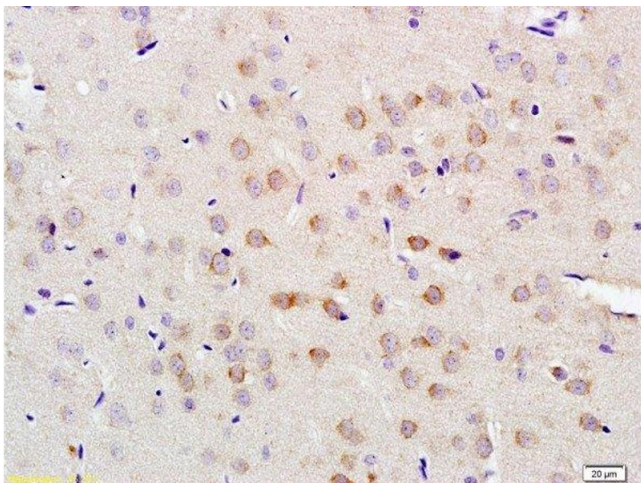
Expiry Date: 12 months

Images



Immunohistochemistry

Image 1. Formalin-fixed and paraffin embedded rat brain tissue labeled with Anti-LLGL1/2 Polyclonal Antibody, Unconjugated (ABIN761966) at 1:200 followed by conjugation to the secondary antibody and DAB staining



Immunohistochemistry (Paraffin-embedded Sections)

Image 2. Formalin-fixed and paraffin embedded rat brain tissue labeled with Anti-LLGL1/2 Polyclonal Antibody, Unconjugated at 1:200 followed by conjugation to the secondary antibody and DAB staining