



Datasheet for ABIN762056  
**anti-MTSS1 antibody (AA 101-200)**



[Go to Product page](#)

1 Image

1 Publication

### Overview

Quantity:	100 µL
Target:	MTSS1
Binding Specificity:	AA 101-200
Reactivity:	Mouse
Host:	Rabbit
Clonality:	Polyclonal
Conjugate:	This MTSS1 antibody is un-conjugated
Application:	Western Blotting (WB), ELISA, Immunofluorescence (Cultured Cells) (IF (cc)), Immunofluorescence (Paraffin-embedded Sections) (IF (p)), Immunohistochemistry (Paraffin-embedded Sections) (IHC (p)), Immunohistochemistry (Frozen Sections) (IHC (fro))

### Product Details

Immunogen:	KLH conjugated synthetic peptide derived from human MTSS1
Isotype:	IgG
Cross-Reactivity:	Mouse
Predicted Reactivity:	Human,Rat,Dog,Cow,Horse,Chicken,Rabbit
Purification:	Purified by Protein A.

### Target Details

Target:	MTSS1
---------	-------

## Target Details

---

Alternative Name:	Mtss1 ( <a href="#">MTSS1 Products</a> )
Background:	Synonyms: MIM, MIMA, MIMB, Metastasis suppressor protein 1, Metastasis suppressor YGL-1, Missing in metastasis protein, MTSS1, KIAA429 Background: May be related to cancer progression or tumor metastasis in a variety of organ sites, most likely through an interaction with the actin cytoskeleton.
Gene ID:	9788
UniProt:	<a href="#">O43312</a>

## Application Details

---

Application Notes:	WB 1:300-5000 ELISA 1:500-1000 IHC-P 1:200-400 IHC-F 1:100-500 IF(IHC-P) 1:50-200 IF(IHC-F) 1:50-200 IF(ICC) 1:50-200
Restrictions:	For Research Use only

## Handling

---

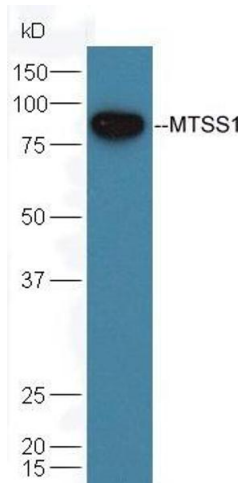
Format:	Liquid
Concentration:	1 µg/µL
Buffer:	0.01M TBS( pH 7.4) with 1 % BSA, 0.02 % Proclin300 and 50 % Glycerol.
Preservative:	ProClin
Precaution of Use:	This product contains ProClin: a POISONOUS AND HAZARDOUS SUBSTANCE, which should be handled by trained staff only.
Storage:	4 °C,-20 °C
Storage Comment:	Shipped at 4°C. Store at -20°C for one year. Avoid repeated freeze/thaw cycles.
Expiry Date:	12 months

## Publications

---

Product cited in:	Chen, Chen, Zhao, Yang, Imran, Xing: "Microarray analyses reveal liver metastasis-related genes
-------------------	---

in metastatic colorectal cancer cell model." in: **Journal of cancer research and clinical oncology**, Vol. 139, Issue 7, pp. 1169-78, (2013) ([PubMed](#)).



#### Western Blotting

**Image 1.** Mouse testicular lysate probed with Rabbit Anti-MTSS1 Polyclonal Antibody (ABIN762056) at 1:300 overnight in 4 °C. Followed by conjugation to the secondary antibody at 1:5000 90min in 37 °C