



[Go to Product page](#)

Datasheet for ABIN763151
anti-GPR124 antibody (AA 1201-1303)

1 Image

Overview

Quantity:	100 µL
Target:	GPR124
Binding Specificity:	AA 1201-1303
Reactivity:	Human
Host:	Rabbit
Clonality:	Polyclonal
Conjugate:	This GPR124 antibody is un-conjugated
Application:	ELISA, Western Blotting (WB), Immunohistochemistry (Paraffin-embedded Sections) (IHC (p)), Immunofluorescence (Cultured Cells) (IF (cc)), Immunofluorescence (Paraffin-embedded Sections) (IF (p)), Immunohistochemistry (Frozen Sections) (IHC (fro))

Product Details

Immunogen:	KLH conjugated synthetic peptide derived from human GPR124
Isotype:	IgG
Predicted Reactivity:	Human,Mouse,Rat,Dog,Cow,Pig
Purification:	Purified by Protein A.

Target Details

Target:	GPR124
Alternative Name:	Gpr124 (GPR124 Products)

Target Details

Background: Synonyms: TEM5, GPR124, G-protein coupled receptor 124, Tumor endothelial marker 5, KIAA1531
Background: Endothelial receptor that acts as an essential regulator of CNS angiogenesis. Required for normal endothelial cell sprouting and migration in the forebrain and neural tube (By similarity).

Gene ID: 25960

UniProt: [Q96PE1](#)

Application Details

Application Notes: WB 1:300-5000
ELISA 1:500-1000
IHC-P 1:200-400
IHC-F 1:100-500
IF(IHC-P) 1:50-200
IF(IHC-F) 1:50-200
IF(ICC) 1:50-200

Restrictions: For Research Use only

Handling

Format: Liquid

Concentration: 1 µg/µL

Buffer: 0.01M TBS(pH 7.4) with 1 % BSA, 0.02 % Proclin300 and 50 % Glycerol.

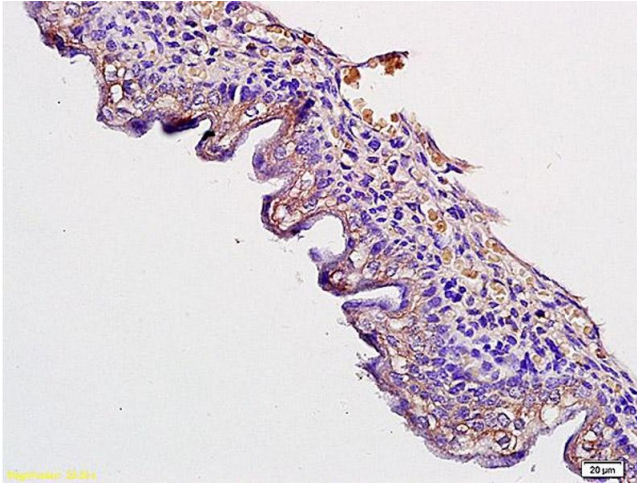
Preservative: ProClin

Precaution of Use: This product contains ProClin: a POISONOUS AND HAZARDOUS SUBSTANCE, which should be handled by trained staff only.

Storage: 4 °C, -20 °C

Storage Comment: Shipped at 4°C. Store at -20°C for one year. Avoid repeated freeze/thaw cycles.

Expiry Date: 12 months



Immunohistochemistry

Image 1. Formalin-fixed and paraffin embedded mouse embryo tissue labeled with Anti GPR124 Polyclonal Antibody, Unconjugated (ABIN763151) at 1:200 followed by conjugation to the secondary antibody and DAB staining