

Datasheet for ABIN7639770

anti-GZMM antibody[Go to Product page](#)**1** Image

Overview

Quantity:	100 µL
Target:	GZMM
Reactivity:	Human
Host:	Rabbit
Clonality:	Polyclonal
Conjugate:	This GZMM antibody is un-conjugated
Application:	Western Blotting (WB), Immunohistochemistry (IHC)

Product Details

Purpose:	Polyclonal Antibody to Granzyme M (GZMM)
Immunogen:	RPA431Hu01Recombinant Granzyme M (GZMM)
Isotype:	IgG
Specificity:	The antibody is a rabbit polyclonal antibody raised against GZMM. It has been selected for its ability to recognize GZMM in immunohistochemical staining and western blotting.
Cross-Reactivity:	Rat
Purification:	Antigen-specific affinity chromatography followed by Protein A affinity chromatography

Target Details

Target:	GZMM
Alternative Name:	GZMM

Target Details

Background: GZM-M, LMET1, MET1, Hu-Met-1, Met-ase, Lymphocyte Met Ase 1, Met-1 serine protease, Natural killer cell granular protease

UniProt: [P51124](#)

Application Details

Application Notes: Western blotting: 0.01-2 µg/mL, Immunohistochemistry: 5-20 µg/mL, Optimal working dilutions must be determined by end user.

Comment: The thermal stability is described by the loss rate. The loss rate was determined by accelerated thermal degradation test, that is, incubate the protein at 37°C for 48h, and no obvious degradation and precipitation were observed. The loss rate is less than 5% within the expiration date under appropriate storage condition.

Restrictions: For Research Use only

Handling

Format: Liquid

Concentration: 0.5 mg/mL

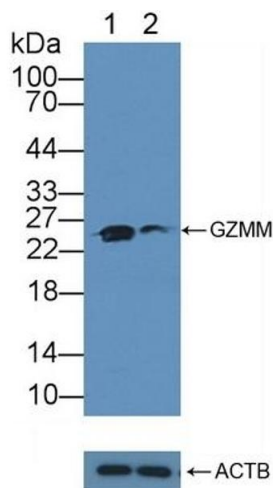
Buffer: 0.01M PBS, pH 7.4, containing 0.05 % Proclin-300, 50 % glycerol.

Preservative: ProClin

Precaution of Use: This product contains ProClin: a POISONOUS AND HAZARDOUS SUBSTANCE which should be handled by trained staff only.

Storage: 4 °C, -20 °C

Storage Comment: Store at 4°C for frequent use. Stored at -20°C in a manual defrost freezer for two year without detectable loss of activity. Avoid repeated freeze-thaw cycles.



Western Blotting

Image 1. Knockout Varification: Lane 1: Wild-type K562 cell lysate, Lane 2: GZMM knockout K562 cell lysate, Predicted MW: 28kd Observed MW: 25kd Primary Ab: 1 µg/mL Rabbit Anti-Human GZMM Antibody Second Ab: 0.2 µg/mL HRP-Linked Caprine Anti-Rabbit IgG Polyclonal Antibody (ABIN6950948)