

Datasheet for ABIN7645321 **anti-Recoverin antibody**



[Go to Product page](#)

1 Image

Overview

Quantity:	100 µL
Target:	Recoverin (RCVRN)
Reactivity:	Human
Host:	Rabbit
Clonality:	Polyclonal
Conjugate:	This Recoverin antibody is un-conjugated
Application:	Western Blotting (WB), Immunohistochemistry (IHC), Immunoprecipitation (IP), Immunocytochemistry (ICC)

Product Details

Purpose:	Polyclonal Antibody to Recoverin (RCVRN)
Immunogen:	RPF484Hu01Recombinant Recoverin (RCVRN)
Isotype:	IgG
Specificity:	The antibody is a rabbit polyclonal antibody raised against RCVRN. It has been selected for its ability to recognize RCVRN in immunohistochemical staining and western blotting.
Cross-Reactivity:	Mouse, Pig, Rat
Purification:	Antigen-specific affinity chromatography followed by Protein A affinity chromatography

Target Details

Target:	Recoverin (RCVRN)
---------	-------------------

Target Details

Alternative Name: RCVRN

Background: RCV1, Cancer-associated retinopathy protein

UniProt: [P35243](#)

Pathways: [Regulation of G-Protein Coupled Receptor Protein Signaling, Phototransduction](#)

Application Details

Application Notes: Western blotting: 0.5-2 µg/mL, Immunohistochemistry: 5-20 µg/mL, Immunocytochemistry: 5-20 µg/mL, Optimal working dilutions must be determined by end user.

Comment: The thermal stability is described by the loss rate. The loss rate was determined by accelerated thermal degradation test, that is, incubate the protein at 37°C for 48h, and no obvious degradation and precipitation were observed. The loss rate is less than 5% within the expiration date under appropriate storage condition.

Restrictions: For Research Use only

Handling

Format: Liquid

Concentration: 500 µg/mL

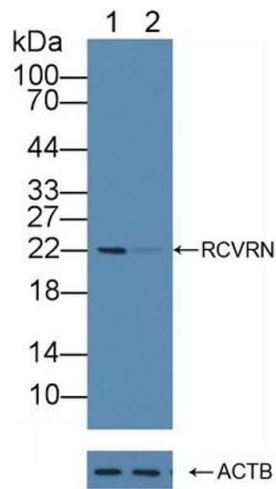
Buffer: PBS, pH 7.4, containing 0.02 % Sodium azide, 50 % glycerol.

Preservative: Sodium azide

Precaution of Use: This product contains Sodium azide: a POISONOUS AND HAZARDOUS SUBSTANCE which should be handled by trained staff only.

Storage: 4 °C, -20 °C

Storage Comment: Store at 4°C for frequent use. Stored at -20°C in a manual defrost freezer for two year without detectable loss of activity. Avoid repeated freeze-thaw cycles.



Western Blotting

Image 1. Knockout Varification: Lane 1: Wild-type WERI-RB-1 cell lysate, Lane 2: RCVRN knockout WERI-RB-1 cell lysate, Predicted MW: 23kd Observed MW: 22kd Primary Ab: 2 µg/mL Rabbit Anti-Human RCVRN Antibody Second Ab: 0.2 µg/mL HRP-Linked Caprine Anti-Rabbit IgG Polyclonal Antibody (ABIN6950948)