

Datasheet for ABIN768541
anti-CD56 antibody (Internal Region)[Go to Product page](#)

4 Images

Overview

Quantity:	100 µg
Target:	CD56 (NCAM1)
Binding Specificity:	Internal Region
Reactivity:	Human
Host:	Goat
Clonality:	Polyclonal
Conjugate:	This CD56 antibody is un-conjugated
Application:	Flow Cytometry (FACS), Western Blotting (WB), Immunohistochemistry (IHC), ELISA

Product Details

Purpose:	CD56 / NCAM1 (isoform 2)
Immunogen:	Peptide with sequence C-KASWTRPEKQETLD, from the internal region of the protein sequence according to NP_851996.2.
Sequence:	KASWTRPEKQ ETLD
Isotype:	IgG
Specificity:	This antibody is expected to recognize reported isoform 2 (NP_851996.2) only.
Cross-Reactivity:	Cow, Human, Pig, Rat
Purification:	Purified from goat serum by ammonium sulphate precipitation followed by antigen affinity chromatography using the immunizing peptide.
Grade:	Verified

Target Details

Target:	CD56 (NCAM1)
Alternative Name:	NCAM1 (NCAM1 Products)
Background:	NCAM1, neural cell adhesion molecule 1, CD56, MSK39, NCAM, N-CAM-1, NCAM-1, antigen recognized by monoclonal antibody 5.1H11, neural cell adhesion molecule, NCAM
Molecular Weight:	94.6kDa according to NP_851996.2
Gene ID:	4684, 24586
NCBI Accession:	NP_851996

Application Details

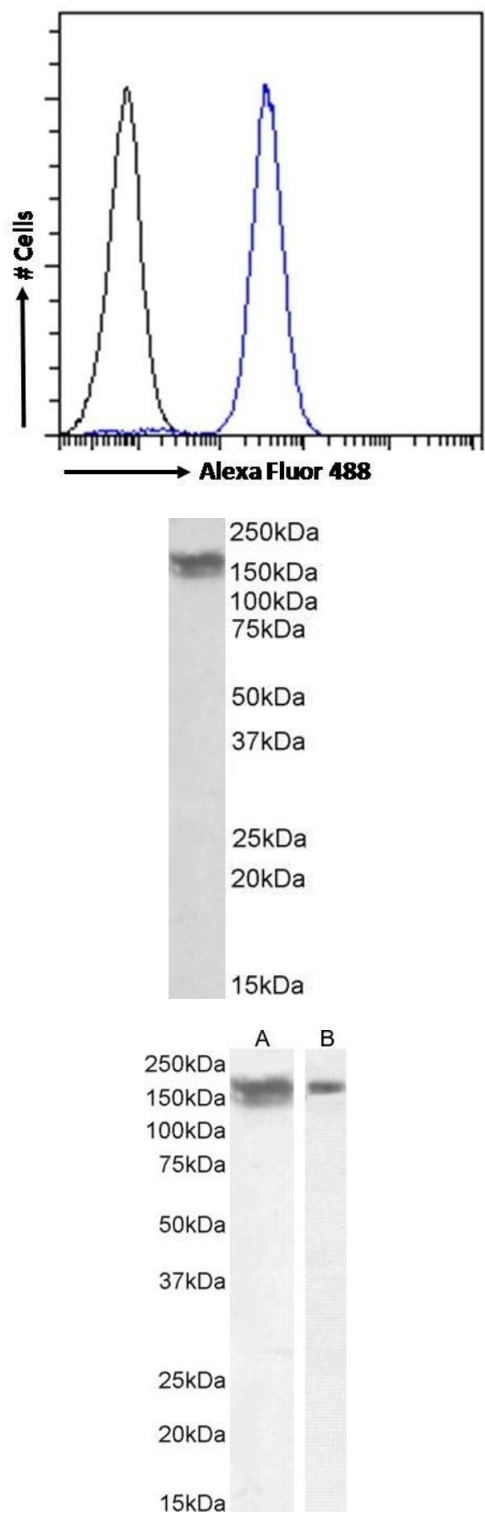
Application Notes:	Immunohistochemistry: Paraffin embedded Human Adrenal Gland. Recommended concentration: 5 µg/mL. Western Blot: Approx 150-170 kDa band observed in Human Cerebellum and Frontal Cortex lysates (calculated MW of 94.6 kDa according to NP_851996.2). The observed molecular weight corresponds to the glycosylated form and is routinely observed by other source Peptide ELISA: antibody detection limit dilution 1:32000.
Comment:	Flow Cytometry: Flow cytometric analysis of U251 cells. Recommended concentration: 10ug/ml.
Restrictions:	For Research Use only

Handling

Format:	Liquid
Concentration:	0.5 mg/mL
Buffer:	Supplied at 0.5 mg/mL in Tris saline, 0.02 % sodium azide, pH 7.3 with 0.5 % bovine serum albumin.
Preservative:	Sodium azide
Precaution of Use:	This product contains Sodium azide: a POISONOUS AND HAZARDOUS SUBSTANCE which should be handled by trained staff only.
Handling Advice:	Minimize freezing and thawing.
Storage:	-20 °C
Storage Comment:	Aliquot and store at -20°C, with minimal freeze/thawing. A working aliquot may be refrigerated

at 4°C for a few weeks and still remain viable.

Images



Flow Cytometry

Image 1. (ABIN768541) Flow cytometric analysis of paraformaldehyde fixed U251 cells (blue line), permeabilized with 0.5 % Triton. Primary incubation 1hr (10 µg/mL) followed by Alexa Fluor 488 secondary antibody (1 µg/mL). IgG control: Unimmunized goat IgG (black line) followed by Alexa Fluor 488 secondary antibody.

Western Blotting

Image 2. ABIN768541 (0.01µg/ml) staining of Human Frontal Cortex lysate (35µg protein in RIPA buffer). Primary incubation was 1 hour. Detected by chemiluminescence.

Western Blotting

Image 3. (ABIN768541) (0.01 µg/mL) staining of Human Frontal Cortex (A) and (0.1 µg/mL) Cerebellum (B) lysate (35 µg protein in RIPA buffer). Detected by chemiluminescence.

Please check the [product details page](#) for more images. Overall 4 images are available for ABIN768541.