

Datasheet for ABIN768545  
**anti-AES antibody (N-Term)**

## 2 Images

[Go to Product page](#)

## Overview

Quantity:	100 µg
Target:	AES
Binding Specificity:	N-Term
Reactivity:	Human
Host:	Goat
Clonality:	Polyclonal
Conjugate:	This AES antibody is un-conjugated
Application:	Western Blotting (WB), ELISA, Immunohistochemistry (IHC)

## Product Details

Purpose:	AES
Immunogen:	Peptide with sequence SHLPQQLKFTTSD-C, from the N Terminus of the protein sequence according to NP_945320.1, NP_001121.2, NP_945321.1.
Sequence:	SHLPQQLKFT TSD
Isotype:	IgG
Specificity:	This antibody is expected to recognize all reported isoforms (NP_945320.1, NP_001121.2, NP_945321.1).
Cross-Reactivity:	Human, Mouse, Rat
Purification:	Purified from goat serum by ammonium sulphate precipitation followed by antigen affinity chromatography using the immunizing peptide.

## Product Details

Grade: Verified

## Target Details

Target: AES

Alternative Name: AES ([AES Products](#))

Background: AES, amino-terminal enhancer of split, AES-1, AES-2, ESP1, GRG, GRG5, TLE5, amino enhancer of split, gp130-associated protein GAM

Molecular Weight: 29.1kDa according to NP\_945320.1

Gene ID: 166, 14797, 29466

NCBI Accession: [NP\\_945320](#), [NP\\_001121](#), [NP\\_945321](#)

Pathways: [WNT Signaling](#), [SARS-CoV-2 Protein Interactome](#)

## Application Details

Application Notes: Immunohistochemistry: Paraffin embedded Human Colon. Recommended concentration: 3.75 µg/mL.  
Western Blot: Approx 30 kDa band observed in Human Brain (Cerebellum and Cerebral Cortex) lysates (calculated MW of 29.1 kDa according to NP\_945320.1). Recommended concentration: 0.3-1 µg/mL.  
Peptide ELISA: antibody detection limit dilution 1:64000.

Restrictions: For Research Use only

## Handling

Format: Liquid

Concentration: 0.5 mg/mL

Buffer: Supplied at 0.5 mg/mL in Tris saline, 0.02 % sodium azide, pH 7.3 with 0.5 % bovine serum albumin.

Preservative: Sodium azide

Precaution of Use: This product contains Sodium azide: a POISONOUS AND HAZARDOUS SUBSTANCE which should be handled by trained staff only.

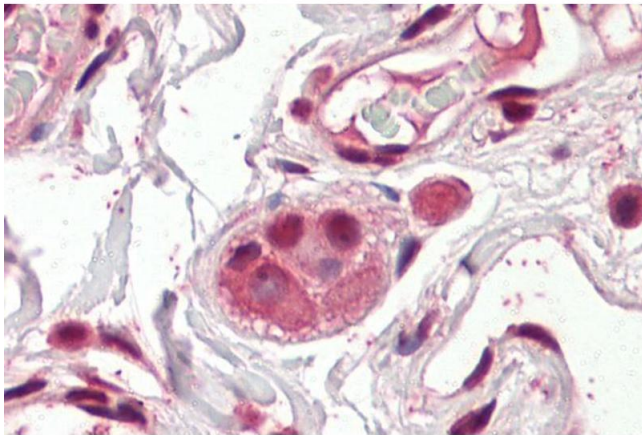
Handling Advice: Minimize freezing and thawing.

## Handling

Storage: -20 °C

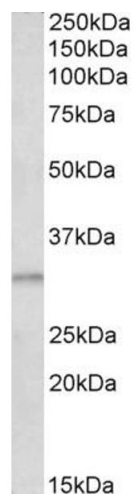
Storage Comment: Aliquot and store at -20°C, with minimal freeze/thawing. A working aliquot may be refrigerated at 4°C for a few weeks and still remain viable.

## Images



### Immunohistochemistry

**Image 1.** ABIN768545 (3.75µg/ml) staining of paraffin embedded Human Colon. Steamed antigen retrieval with citrate buffer pH 6, AP-staining.



### Western Blotting

**Image 2.** ABIN768545 (0.3µg/ml) staining of Human Cerebral Cortex lysate (35µg protein in RIPA buffer). Primary incubation was 1 hour. Detected by chemiluminescence.