

Datasheet for ABIN768548
anti-PDIA2 antibody (AA 477-481)

2 Images

[Go to Product page](#)

Overview

Quantity:	100 µg
Target:	PDIA2
Binding Specificity:	AA 477-481
Reactivity:	Human, Mouse, Rat
Host:	Goat
Clonality:	Polyclonal
Conjugate:	This PDIA2 antibody is un-conjugated
Application:	ELISA, Western Blotting (WB), Immunohistochemistry (IHC)

Product Details

Purpose:	PDIA2 (aa477-481)
Immunogen:	Peptide with sequence C-EYKSTRDLETFSK, from the internal region (near C Terminus) of the protein sequence according to NP_006840.2.
Sequence:	EYKSTRDLET FSK
Isotype:	IgG
Cross-Reactivity:	Human, Mouse, Rat
Purification:	Purified from goat serum by ammonium sulphate precipitation followed by antigen affinity chromatography using the immunizing peptide.
Grade:	Verified

Target Details

Target:	PDIA2
Alternative Name:	PDIA2 (PDIA2 Products)
Background:	PDIA2, protein disulfide isomerase family A, member 2, LA16c-314G4.2, PDA2, PDI, PDIP, PDIR, OTTHUMP00000067350, OTTHUMP00000197166, Rho GDP dissociation inhibitor gamma, pancreas-specific protein disulfide isomerase, pancreatic protein disulfide isomeras
Molecular Weight:	58.2kDa according to NP_006840.2
Gene ID:	64714, 69191, 287164
NCBI Accession:	NP_006840
Pathways:	Maintenance of Protein Location , Cell RedoxHomeostasis , Unfolded Protein Response

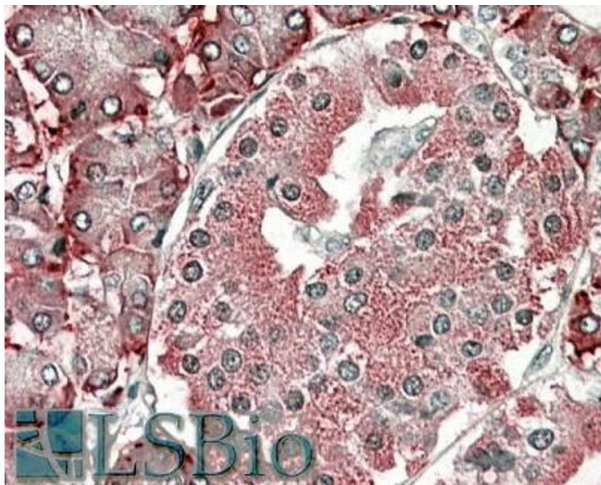
Application Details

Application Notes:	<p>Immunohistochemistry: In paraffin embedded Human Pancreas shows ER staining in the beta cells of Islets of Lagerhans . Recommended concentration, 3-5 µg/mL.</p> <p>Western Blot: Approx 65 kDa band observed in Human, Mouse and Rat Pancreas lysates (calculated MW of 58.2 kDa according to NP_006840.2). Recommended concentration: 0.01-0.03 µg/mL.</p> <p>Peptide ELISA: antibody detection limit dilution 1:64000.</p>
Restrictions:	For Research Use only

Handling

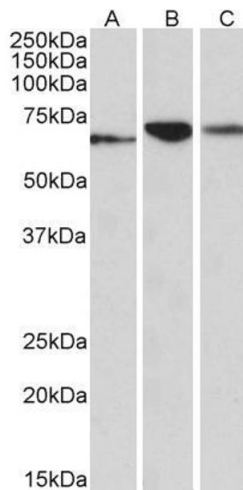
Format:	Liquid
Concentration:	0.5 mg/mL
Buffer:	Supplied at 0.5 mg/mL in Tris saline, 0.02 % sodium azide, pH 7.3 with 0.5 % bovine serum albumin.
Preservative:	Sodium azide
Precaution of Use:	This product contains Sodium azide: a POISONOUS AND HAZARDOUS SUBSTANCE which should be handled by trained staff only.
Handling Advice:	Minimize freezing and thawing.
Storage:	-20 °C
Storage Comment:	Aliquot and store at -20°C, with minimal freeze/thawing. A working aliquot may be refrigerated

at 4°C for a few weeks and still remain viable.



Immunohistochemistry

Image 1. ABIN768548 (3.8µg/ml) staining of paraffin embedded Human Pancreas. Steamed antigen retrieval with citrate buffer pH 6, AP-staining.



Western Blotting

Image 2. ABIN768548 (0.1µg/ml) staining of Human (A), Mouse (B) and Rat (C) Pancreas lysates (35µg protein in RIPA buffer). Primary incubation was 1 hour. Detected by chemiluminescence.