

Datasheet for ABIN768551

anti-GNB2L1 antibody (Internal Region)**3** Images[Go to Product page](#)

Overview

Quantity:	100 µg
Target:	GNB2L1
Binding Specificity:	Internal Region
Reactivity:	Human, Mouse, Rat
Host:	Goat
Clonality:	Polyclonal
Conjugate:	This GNB2L1 antibody is un-conjugated
Application:	Western Blotting (WB), Immunohistochemistry (IHC), ELISA

Product Details

Purpose:	GNB2L1
Immunogen:	Peptide with sequence NTLGVCKYTVQDESH, from the internal region of the protein sequence according to NP_006089.1.
Sequence:	NTLGVCKYTV QDESH
Isotype:	IgG
Cross-Reactivity:	Cow, Dog, Human, Mouse, Rat
Purification:	Purified from goat serum by ammonium sulphate precipitation followed by antigen affinity chromatography using the immunizing peptide.
Grade:	Verified

Target Details

Target:	GNB2L1
Alternative Name:	RACK1 (GNB2L1 Products)
Background:	GNB2L1, guanine nucleotide binding protein (G protein), beta polypeptide 2-like 1, Gnb2-rs1, H12.3, HLC-7, PIG21, RACK1, OTTHUMP00000223930, Receptor for Activated C Kinase 1, cell proliferation-inducing gene 21 protein, guanine nucleotide-binding protein
Molecular Weight:	35.1kDa according to NP_006089.1
Gene ID:	10399, 14694, 83427
NCBI Accession:	NP_006089
Pathways:	cAMP Metabolic Process , Positive Regulation of Endopeptidase Activity

Application Details

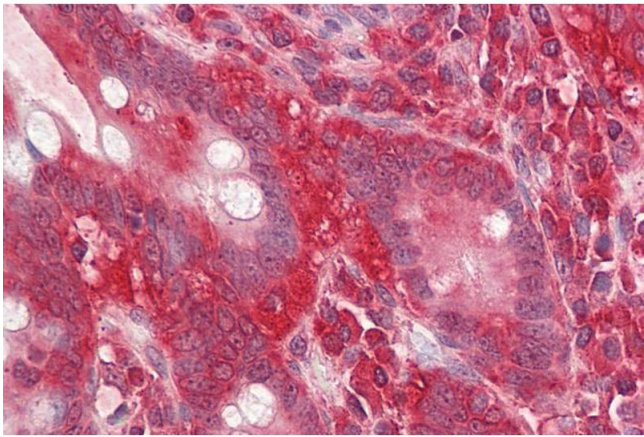
Application Notes:	Immunohistochemistry: Paraffin embedded Human Small Intestine. Recommended concentration: 3.75 µg/mL. Western Blot: Approx 33 kDa band observed in Human Lymph Nodes, in Mouse and Rat Spleen lysates and in lysates of many cell lines (calculated MW of 35.1 kDa according to NP_006089.1). Recommended concentration: 0.1-0.3 µg/mL. Primary incubation was 1 hour. Peptide ELISA: antibody detection limit dilution 1:128000.
Restrictions:	For Research Use only

Handling

Format:	Liquid
Concentration:	0.5 mg/mL
Buffer:	Supplied at 0.5 mg/mL in Tris saline, 0.02 % sodium azide, pH 7.3 with 0.5 % bovine serum albumin.
Preservative:	Sodium azide
Precaution of Use:	This product contains Sodium azide: a POISONOUS AND HAZARDOUS SUBSTANCE which should be handled by trained staff only.
Handling Advice:	Minimize freezing and thawing.
Storage:	-20 °C
Storage Comment:	Aliquot and store at -20°C, with minimal freeze/thawing. A working aliquot may be refrigerated

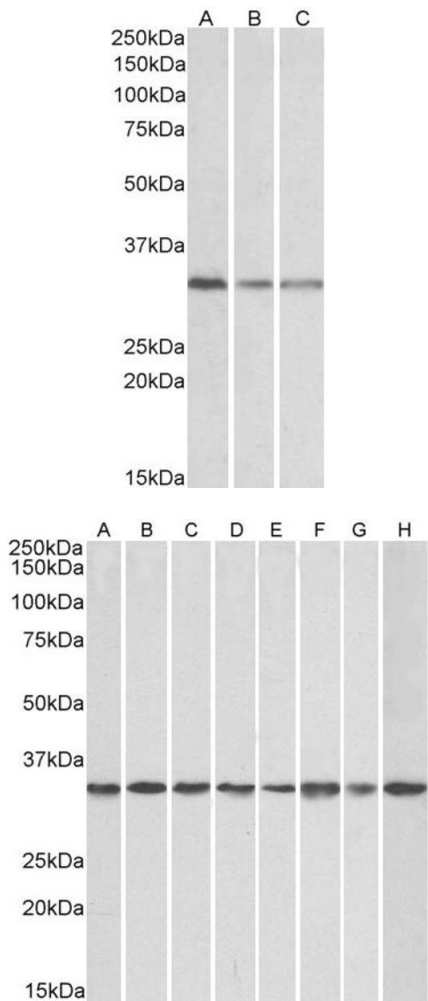
at 4°C for a few weeks and still remain viable.

Images



Immunohistochemistry

Image 1. ABIN768551 (3.75µg/ml) staining of paraffin embedded Human Small Intestine. Steamed antigen retrieval with citrate buffer pH 6, AP-staining.



Western Blotting

Image 2. ABIN768551 (0.1µg/ml) staining of Human Lymph Node (A), Mouse Spleen (B) and Rat Spleen (C) lysates (35µg protein in RIPA buffer). Detected by chemiluminescence.

Western Blotting

Image 3. ABIN768551 (0.1µg/ml) staining of NIH3T3 (A), HeK293 (B), HeLa (C, A431(D), A549 (E), MCF7 (F), Jurkat (G), K562 (H) lysates (35µg protein in RIPA buffer). Detected by chemiluminescence.