

Datasheet for ABIN768558
anti-PKD1 antibody (AA 2281-2292)[Go to Product page](#)

1 Image

Overview

Quantity:	100 µg
Target:	PKD1
Binding Specificity:	AA 2281-2292
Reactivity:	Human, Mouse, Rat, Dog, Pig
Host:	Goat
Clonality:	Polyclonal
Conjugate:	This PKD1 antibody is un-conjugated
Application:	ELISA

Product Details

Purpose:	PKD1 (aa2281-2292)
Immunogen:	Peptide with sequence C-KSYDPNLEDGDQT, from the C Terminus of the protein sequence according to NP_001009944.2, NP_000287.3.
Sequence:	KSYDPNLEDG DQT
Isotype:	IgG
Specificity:	This antibody is expected to recognize both reported isoforms (NP_001009944.2, NP_000287.3).
Predicted Reactivity:	Human, Mouse, Rat, Dog, Pig
Purification:	Purified from goat serum by ammonium sulphate precipitation followed by antigen affinity chromatography using the immunizing peptide.

Product Details

Grade: Recent

Target Details

Target: PKD1

Alternative Name: PKD1 ([PKD1 Products](#))

Background: PKD1, polycystic kidney disease 1 (autosomal dominant), PBP, Pc-1, TRPP1, autosomal dominant polycystic kidney disease 1 protein, polycystic kidney disease-associated protein, polycystin 1, polycystin-1, transient receptor potential cation channel, subfamily P, member 1

Molecular Weight: 463kDa

Gene ID: 5310

NCBI Accession: [NP_001009944](#), [NP_000287](#)

Pathways: [Myometrial Relaxation and Contraction](#), [Maintenance of Protein Location](#)

Application Details

Application Notes: DS WB Results: Not yet tested - our routinely used western blotting protocol does not allow detection of proteins as large as the calculated size of 463 kDa according to NP_000287.3. Therefore we cannot recommend an optimal concentration and the antibody is an aspiring product.
Peptide ELISA: antibody detection limit dilution 1:1000.

Restrictions: For Research Use only

Handling

Format: Liquid

Concentration: 0.5 mg/mL

Buffer: Supplied at 0.5 mg/mL in Tris saline, 0.02 % sodium azide, pH 7.3 with 0.5 % bovine serum albumin.

Preservative: Sodium azide

Precaution of Use: This product contains Sodium azide: a POISONOUS AND HAZARDOUS SUBSTANCE which should be handled by trained staff only.

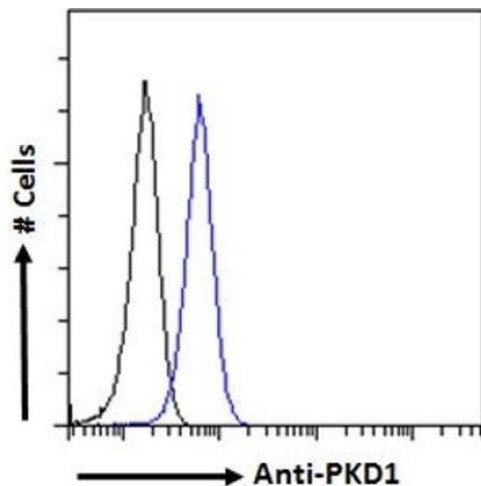
Handling Advice: Minimize freezing and thawing.

Handling

Storage: -20 °C

Storage Comment: Aliquot and store at -20°C, with minimal freeze/thawing. A working aliquot may be refrigerated at 4°C for a few weeks and still remain viable.

Images



Flow Cytometry

Image 1. ABIN768558 Flow cytometric analysis of paraformaldehyde fixed HEK293 cells (blue line), permeabilized with 0.5 % Triton. Primary incubation 1hr (10 µg/mL) followed by Alexa Fluor 488 secondary antibody (1 µg/mL). IgG control: Unimmunized goat IgG (black line)