



[Go to Product page](#)

Datasheet for ABIN768559  
**anti-IDH3G antibody (AA 337-350)**

3 Images

Overview

Quantity:	100 µg
Target:	IDH3G
Binding Specificity:	AA 337-350
Reactivity:	Human, Rat, Pig
Host:	Goat
Clonality:	Polyclonal
Conjugate:	This IDH3G antibody is un-conjugated
Application:	Western Blotting (WB), ELISA, Immunohistochemistry (IHC)

Product Details

Purpose:	IDH3G (aa337-350)
Immunogen:	Peptide with sequence C-DHLKLHSYATSIRK, from the internal region of the protein sequence according to NP_004126.1, NP_777358.1.
Sequence:	DHLKLHSYAT SIRK
Isotype:	IgG
Specificity:	This antibody is expected to recognize both reported isoforms (NP_004126.1, NP_777358.1).
Cross-Reactivity:	Cow, Dog, Human, Mouse, Pig, Rat
Purification:	Purified from goat serum by ammonium sulphate precipitation followed by antigen affinity chromatography using the immunizing peptide.
Grade:	Verified

## Target Details

---

Target:	IDH3G
Alternative Name:	IDH3G ( <a href="#">IDH3G Products</a> )
Background:	IDH3G, isocitrate dehydrogenase 3 (NAD+) gamma, H-IDHG, IDH-gamma, NAD (H)-specific isocitrate dehydrogenase gamma subunit, NAD(+)-specific ICDH subunit gamma, NAD+-specific ICDH, OTTHUMP00000025984, OTTHUMP00000025987, OTTHUMP00000025988, isocitrate dehy
Molecular Weight:	41.5kDa according to NP_777358.1
Gene ID:	3421, 15929, 25179
NCBI Accession:	<a href="#">NP_004126</a> , <a href="#">NP_777358</a>

## Application Details

---

Application Notes:	Immunohistochemistry: Paraffin embedded Human Kidney. Recommended concentration: 5 µg/mL. Western Blot: Approx 38 kDa band observed in lysates of cell line MCF7 and of Rat and Pig Heart (calculated MW of 41.5 kDa according to NP_777358.1). Recommended concentration: 0.5-2 µg/mL. Peptide ELISA: antibody detection limit dilution 1:16000.
Restrictions:	For Research Use only

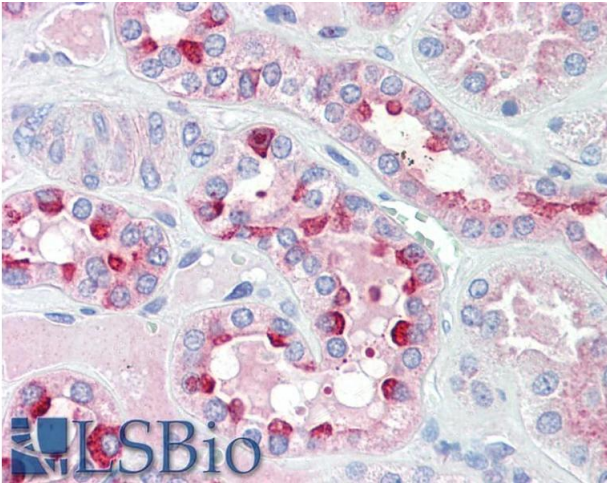
## Handling

---

Format:	Liquid
Concentration:	0.5 mg/mL
Buffer:	Supplied at 0.5 mg/mL in Tris saline, 0.02 % sodium azide, pH 7.3 with 0.5 % bovine serum albumin.
Preservative:	Sodium azide
Precaution of Use:	This product contains Sodium azide: a POISONOUS AND HAZARDOUS SUBSTANCE which should be handled by trained staff only.
Handling Advice:	Minimize freezing and thawing.
Storage:	-20 °C
Storage Comment:	Aliquot and store at -20°C, with minimal freeze/thawing. A working aliquot may be refrigerated

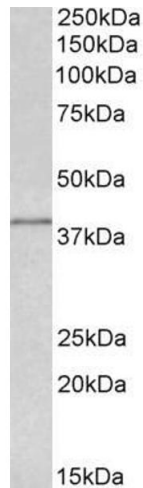
at 4°C for a few weeks and still remain viable.

Images



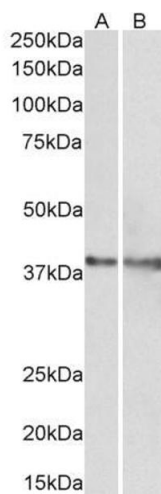
**Immunohistochemistry**

**Image 1.** ABIN768559 (5µg/ml) staining of paraffin embedded Human Kidney. Steamed antigen retrieval with citrate buffer pH 6, AP-staining.



**Western Blotting**

**Image 2.** ABIN768559 (0.5µg/ml) staining of MCF7 lysate (35µg protein in RIPA buffer). Primary incubation was 1 hour. Detected by chemiluminescence.



**Western Blotting**

**Image 3.** ABIN768559 (1µg/ml) staining of Rat (A) and Pig (B) Heart lysate (35µg protein in RIPA buffer). Primary incubation was 1 hour. Detected by chemiluminescence.