

Datasheet for ABIN768580  
**anti-ARL6 antibody (Internal Region)**[Go to Product page](#)

## 1 Image

## Overview

Quantity:	100 µg
Target:	ARL6
Binding Specificity:	Internal Region
Reactivity:	Human
Host:	Goat
Clonality:	Polyclonal
Conjugate:	This ARL6 antibody is un-conjugated
Application:	Immunohistochemistry (IHC), ELISA

## Product Details

Purpose:	Arl6 / BBS3 (mouse)
Immunogen:	Peptide with sequence C-KPSNAQSQDIVPT, from the internal region of the protein sequence according to NP_062639.3.
Sequence:	KPSNAQSQDI VPT
Isotype:	IgG
Specificity:	Reported variants represent identical protein: NP_816931.1, NP_115522.1
Cross-Reactivity:	Cow, Dog, Mouse, Rat
Purification:	Purified from goat serum by ammonium sulphate precipitation followed by antigen affinity chromatography using the immunizing peptide.
Grade:	Verified

## Target Details

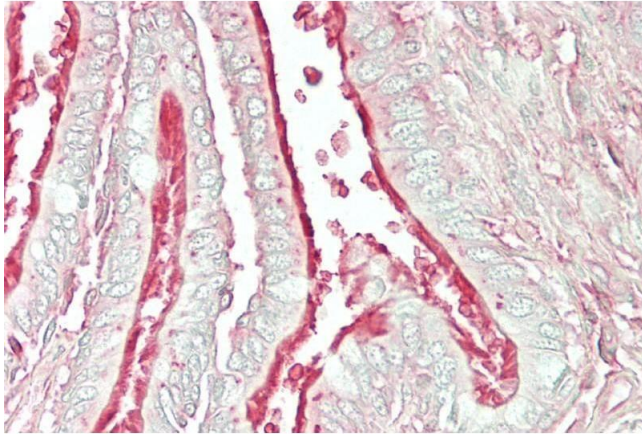
Target:	ARL6
Alternative Name:	Arl6 ( <a href="#">ARL6 Products</a> )
Background:	ARL6, ADP-ribosylation factor-like 6, BBS3, 1110018H24Rik, 2210411E14Rik, ADP-ribosylation factor-like protein 6, ADP-ribosylation-like factor homolog ARL6, bardet-Biedl syndrome 3 protein
Molecular Weight:	33kDa
Gene ID:	56297
NCBI Accession:	<a href="#">NP_062639</a>

## Application Details

Application Notes:	<p>Immunohistochemistry: Paraffin embedded Human Lung. Recommended concentration: 5 µg/mL.</p> <p>Western Blot: Preliminary experiments gave an approx 33 kDa band in Mouse Brain lysates after 1 µg/mL antibody staining. Please note that currently we cannot find an explanation in the literature for the band we observe given the calculated size of 21.0 kDa</p> <p>Peptide ELISA: antibody detection limit dilution 1:16000.</p>
Restrictions:	For Research Use only

## Handling

Format:	Liquid
Concentration:	0.5 mg/mL
Buffer:	Supplied at 0.5 mg/mL in Tris saline, 0.02 % sodium azide, pH 7.3 with 0.5 % bovine serum albumin.
Preservative:	Sodium azide
Precaution of Use:	This product contains Sodium azide: a POISONOUS AND HAZARDOUS SUBSTANCE which should be handled by trained staff only.
Handling Advice:	Minimize freezing and thawing.
Storage:	-20 °C
Storage Comment:	Aliquot and store at -20°C, with minimal freeze/thawing. A working aliquot may be refrigerated at 4°C for a few weeks and still remain viable.



#### Immunohistochemistry

**Image 1.** ABIN768580 (5µg/ml) staining of paraffin embedded Human Lung. Steamed antigen retrieval with citrate buffer pH 6, AP-staining.