



[Go to Product page](#)

Datasheet for ABIN768590

anti-BCL2-Like 15 antibody (Internal Region)

1 Image

Overview

Quantity:	100 µg
Target:	BCL2-Like 15 (BCL2L5)
Binding Specificity:	Internal Region
Reactivity:	Human
Host:	Goat
Clonality:	Polyclonal
Conjugate:	This BCL2-Like 15 antibody is un-conjugated
Application:	ELISA, Immunohistochemistry (IHC)

Product Details

Purpose:	BCL2L15
Immunogen:	Peptide with sequence C-SPTLQVASRN, from the internal region of the protein sequence according to NP_001010922.1.
Sequence:	SPTLQVASRN
Isotype:	IgG
Cross-Reactivity:	Human
Purification:	Purified from goat serum by ammonium sulphate precipitation followed by antigen affinity chromatography using the immunizing peptide.
Grade:	Verified

Target Details

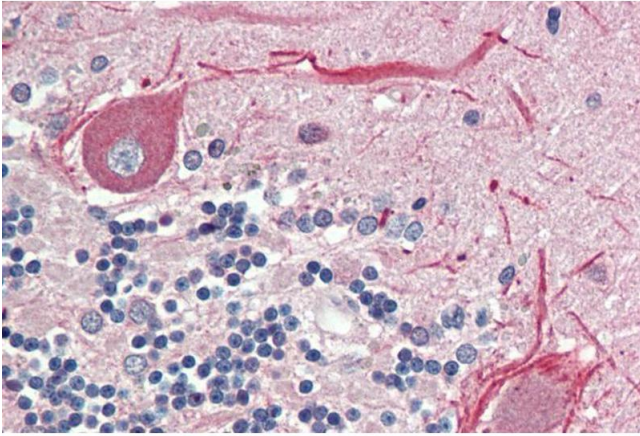
Target:	BCL2-Like 15 (BCL2L5)
Alternative Name:	BCL2L15 (BCL2L5 Products)
Background:	BCL2L15, BCL2-like 15, Bfk, C1orf178, FLJ22588, pro-apoptotic Bcl-2 protein
Gene ID:	440603
NCBI Accession:	NP_001010922

Application Details

Application Notes:	Immunohistochemistry: Paraffin embedded Human Brain (Cerebellum). Recommended concentration: 5 µg/mL. Western Blot: Preliminary experiments in lysates of cell lines A549, HEK293 and Jurkat gave no specific signal but low background (at antibody concentration up to 1 µg/mL). Peptide ELISA: antibody detection limit dilution 1:8000.
Restrictions:	For Research Use only

Handling

Format:	Liquid
Concentration:	0.5 mg/mL
Buffer:	Supplied at 0.5 mg/mL in Tris saline, 0.02 % sodium azide, pH 7.3 with 0.5 % bovine serum albumin.
Preservative:	Sodium azide
Precaution of Use:	This product contains Sodium azide: a POISONOUS AND HAZARDOUS SUBSTANCE which should be handled by trained staff only.
Handling Advice:	Minimize freezing and thawing.
Storage:	-20 °C
Storage Comment:	Aliquot and store at -20°C, with minimal freeze/thawing. A working aliquot may be refrigerated at 4°C for a few weeks and still remain viable.



Immunohistochemistry

Image 1. ABIN768590 (5µg/ml) staining of paraffin embedded Human Cerebellum. Steamed antigen retrieval with citrate buffer pH 6, AP-staining.