

Datasheet for ABIN768601
anti-NRF2 antibody (AA 445-458)

4 Images

[Go to Product page](#)

Overview

Quantity:	100 µg
Target:	NRF2 (NFE2L2)
Binding Specificity:	AA 445-458
Reactivity:	Human
Host:	Goat
Clonality:	Polyclonal
Conjugate:	This NRF2 antibody is un-conjugated
Application:	Western Blotting (WB), ELISA, Immunofluorescence (IF), Flow Cytometry (FACS)

Product Details

Purpose:	NRF2 (aa445-458)
Immunogen:	Peptide with sequence C-KHSSRLEAHLTRDE, from the internal region of the protein sequence according to NP_006155.2, NP_001138884.1, NP_001138885.1.
Sequence:	KHSSRLEAHL TRDE
Isotype:	IgG
Specificity:	This antibody is expected to recognize all reported isoforms (
Cross-Reactivity:	Cow, Dog, Human, Mouse, Pig, Rat
Purification:	Purified from goat serum by ammonium sulphate precipitation followed by antigen affinity chromatography using the immunizing peptide.
Grade:	Verified

Target Details

Target:	NRF2 (NFE2L2)
Alternative Name:	NFE2L2 (NFE2L2 Products)
Background:	NFE2L2, nuclear factor (erythroid-derived 2)-like 2, NRF2, HEBP1, NF-E2-related factor 2, NFE2-related factor 2, OTTHUMP00000205251, OTTHUMP00000207980, nuclear factor erythroid 2-related factor 2, nuclear factor, erythroid derived 2, like 2
Molecular Weight:	67.8kDa according to NP_006155.2
Gene ID:	4780, 18024, 83619
NCBI Accession:	NP_006155 , NP_001138884 , NP_001138885
Pathways:	ER-Nucleus Signaling , Negative Regulation of intrinsic apoptotic Signaling

Application Details

Application Notes:	Western Blot: Approx 70 kDa band observed in Human Lung lysates and approx 75 kDa in preliminary testing of Mouse and Rat Liver and KNRK, MDCK, and nuclear NIH3T3 cell lysate (calculated MW of 67.8 kDa according to NP_006155.2). This molecular weight rate Peptide ELISA: antibody detection limit dilution 1:64000.
Comment:	Immunofluorescence: Strong expression of the protein seen in the cytoplasm and nuclei of U2OS and HeLa cells. Recommended concentration: 10µg/ml. Flow Cytometry: Flow cytometric analysis of HeLa cells. Recommended conc
Restrictions:	For Research Use only

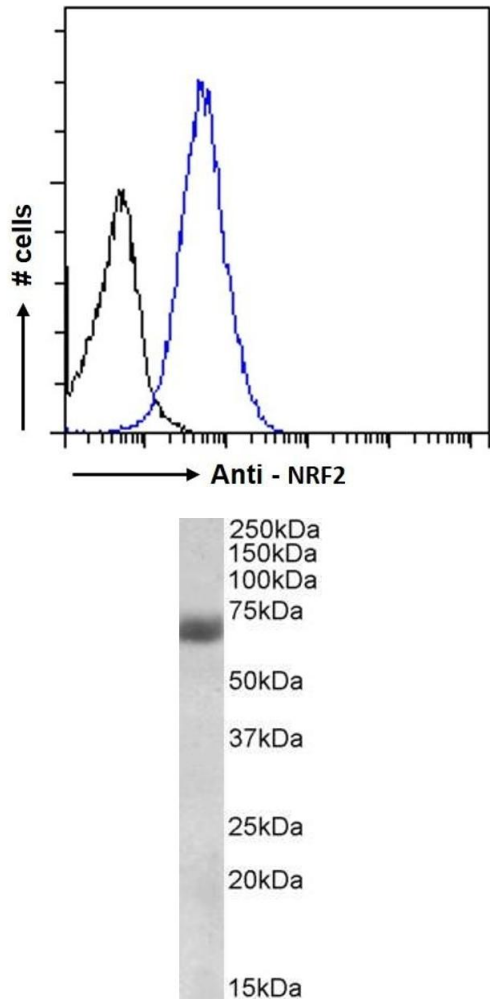
Handling

Format:	Liquid
Concentration:	0.5 mg/mL
Buffer:	Supplied at 0.5 mg/mL in Tris saline, 0.02 % sodium azide, pH 7.3 with 0.5 % bovine serum albumin.
Preservative:	Sodium azide
Precaution of Use:	This product contains Sodium azide: a POISONOUS AND HAZARDOUS SUBSTANCE which should be handled by trained staff only.
Handling Advice:	Minimize freezing and thawing.
Storage:	-20 °C

Handling

Storage Comment: Aliquot and store at -20°C, with minimal freeze/thawing. A working aliquot may be refrigerated at 4°C for a few weeks and still remain viable.

Images

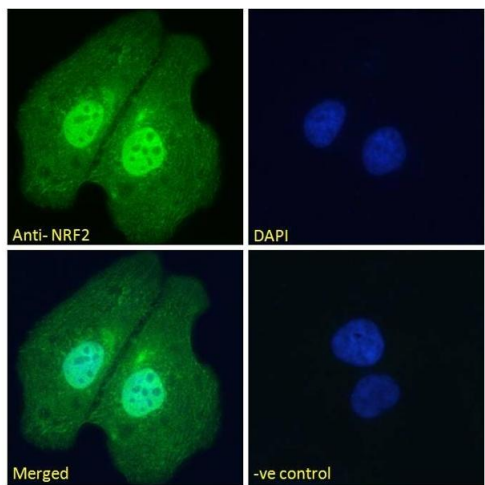


Flow Cytometry

Image 1. ABIN768601 Flow cytometric analysis of paraformaldehyde fixed HeLa cells (blue line), permeabilized with 0.5 % Triton. Primary incubation 1hr (10 µg/mL) followed by Alexa Fluor 488 secondary antibody (1 µg/mL). IgG control: Unimmunized goat IgG (black line) fol

Western Blotting

Image 2. ABIN768601 (0.3µg/ml) staining of Human Lung lysate (35µg protein in RIPA buffer). Detected by chemiluminescence.



Immunofluorescence

Image 3. ABIN768601 Immunofluorescence analysis of paraformaldehyde fixed U2OS cells, permeabilized with 0.15 % Triton. Primary incubation 1hr (10 µg/mL) followed by Alexa Fluor 488 secondary antibody (2 µg/mL), showing nuclear and cytoplasmic staining. The nuclear stai

Please check the [product details page](#) for more images. Overall 4 images are available for ABIN768601.