

Datasheet for ABIN768606

## anti-Tryptophan Hydroxylase 2 antibody (Internal Region)



[Go to Product page](#)

1 Image

1 Publication

### Overview

Quantity:	100 µg
Target:	Tryptophan Hydroxylase 2 (TPH2)
Binding Specificity:	Internal Region
Reactivity:	Mouse
Host:	Goat
Clonality:	Polyclonal
Conjugate:	This Tryptophan Hydroxylase 2 antibody is un-conjugated
Application:	ELISA, Immunofluorescence (IF)

### Product Details

Purpose:	Tph2 (mouse)
Immunogen:	Peptide with sequence C-SLTQNKAIKSEDK, from the internal region of the protein sequence according to NP_775567.2.
Sequence:	SLTQNKAIKS EDK
Isotype:	IgG
Cross-Reactivity:	Mouse
Purification:	Purified from goat serum by ammonium sulphate precipitation followed by antigen affinity chromatography using the immunizing peptide.
Grade:	Verified

## Target Details

Target:	Tryptophan Hydroxylase 2 (TPH2)
Alternative Name:	Tph2 ( <a href="#">TPH2 Products</a> )
Background:	Tph2, tryptophan hydroxylase 2, AU043594, MGC159133, Ntph, OTTMUSP00000022885, neuronal tryptophan hydroxylase, tryptophan 5-hydroxylase 2, tryptophan 5-monooxygenase 2
Molecular Weight:	85kDa
Gene ID:	216343
NCBI Accession:	<a href="#">NP_775567</a>

## Application Details

Application Notes:	Western Blot: Preliminary experiments gave an approx 85 kDa band in Mouse fetal Brain lysates after 0.3 µg/mL antibody staining. Please note that currently we cannot find an explanation in the literature for the band we observe given the calculated size of Peptide ELISA: antibody detection limit dilution 1:32000.
Comment:	<b>Immunofluorescence:</b> In free-floating samples of Mouse Brain stem staining of Raphe nuclei serotonergic neurons can be seen, that is consistent with observation by different antibodies. Recommended concentration, 0.5-2µg/ml.
Restrictions:	For Research Use only

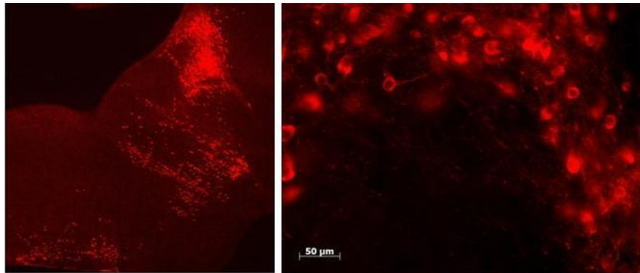
## Handling

Format:	Liquid
Concentration:	0.5 mg/mL
Buffer:	Supplied at 0.5 mg/mL in Tris saline, 0.02 % sodium azide, pH 7.3 with 0.5 % bovine serum albumin.
Preservative:	Sodium azide
Precaution of Use:	This product contains Sodium azide: a POISONOUS AND HAZARDOUS SUBSTANCE which should be handled by trained staff only.
Handling Advice:	Minimize freezing and thawing.
Storage:	-20 °C
Storage Comment:	Aliquot and store at -20°C, with minimal freeze/thawing. A working aliquot may be refrigerated at 4°C for a few weeks and still remain viable.

## Publications

Product cited in: Rahim, Meedeniya, Crane: "Central serotonergic neuron deficiency in a mouse model of Zellweger syndrome." in: **Neuroscience**, Vol. 274, pp. 229-41, (2014) ([PubMed](#)).

## Images



### Immunohistochemistry

**Image 1.** ABIN768606 (0.5µg/ml) staining of paraffin embedded Mouse Brain stem in sagittal (left) and coronal (right) sections of Raphe nuclei. Detection Alexa 594. Data obtained from Prof. D Crane, Griffith Univeristy, Brisbane, Australia