



[Go to Product page](#)

Datasheet for ABIN768610

anti-BPIFA2 antibody (AA 146-160)

1 Image

1 Publication

Overview

Quantity:	100 µg
Target:	BPIFA2
Binding Specificity:	AA 146-160
Reactivity:	Mouse
Host:	Goat
Clonality:	Polyclonal
Conjugate:	This BPIFA2 antibody is un-conjugated
Application:	Western Blotting (WB), ELISA, Immunocytochemistry (ICC)

Product Details

Purpose:	parotid secretory protein (mouse aa146-160)
Immunogen:	Peptide with sequence C-KTNAQTGLPEVTIGK, from the internal region of the protein sequence according to NP_032979.1.
Sequence:	KTNAQTGLPE VTIGK
Isotype:	IgG
Cross-Reactivity:	Mouse
Purification:	Purified from goat serum by ammonium sulphate precipitation followed by antigen affinity chromatography using the immunizing peptide.
Grade:	Verified

Target Details

Target:	BPIFA2
Alternative Name:	Bpifa2 (BPIFA2 Products)
Background:	Psp, parotid secretory protein, Bpifa2e, OTTMUSP00000018314, OTTMUSP00000036473
Gene ID:	19194
NCBI Accession:	NP_032979

Application Details

Application Notes:	Western Blot: Approx 25 kDa band observed in Mouse mandibular glands from E17 onwards (calculated MW of 24.8 kDa according to NP_032979.1). Recommended concentration: 1-3 µg/mL. Data provided by Everest Grant winner Melinda Larsen, State University of New Y Peptide ELISA: antibody detection limit dilution 1:128000.
Comment:	Immunocytochemistry: A subset of murine submandibular gland cells (E18) show specific staining in secretory granules. Recommended concentration 4ug/ml. Data provided by Everest Grant winner Melinda Larsen, State University of New York, AI
Restrictions:	For Research Use only

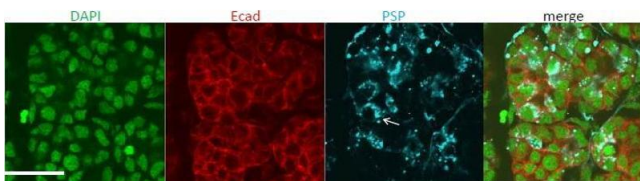
Handling

Format:	Liquid
Concentration:	0.5 mg/mL
Buffer:	Supplied at 0.5 mg/mL in Tris saline, 0.02 % sodium azide, pH 7.3 with 0.5 % bovine serum albumin.
Preservative:	Sodium azide
Precaution of Use:	This product contains Sodium azide: a POISONOUS AND HAZARDOUS SUBSTANCE which should be handled by trained staff only.
Handling Advice:	Minimize freezing and thawing.
Storage:	-20 °C
Storage Comment:	Aliquot and store at -20°C, with minimal freeze/thawing. A working aliquot may be refrigerated at 4°C for a few weeks and still remain viable.

Publications

Product cited in: Tanaka, Ogawa, Hojo, Kawashima, Mabuchi, Hata, Nakamura, Yasuhara, Takamatsu, Irié, Fukada, Sakai, Inoue, Nishimura, Ohara, Saito, Ohba, Tsuji, Mishima: "Generation of orthotopically functional salivary gland from embryonic stem cells." in: **Nature communications**, Vol. 9, Issue 1, pp. 4216, (2019) ([PubMed](#)).

Images



Immunocytochemistry

Image 1. ABIN768610 (4ug/ml) staining of Mouse Submandibular gland cells (in blue). Counter staining of Ecad in red and nuclear staining in green.