

Datasheet for ABIN768626
anti-CMA1 antibody (Internal Region)

4 Images

[Go to Product page](#)

Overview

Quantity:	100 µg
Target:	CMA1
Binding Specificity:	Internal Region
Reactivity:	Human
Host:	Goat
Clonality:	Polyclonal
Conjugate:	This CMA1 antibody is un-conjugated
Application:	Western Blotting (WB), ELISA, Immunohistochemistry (IHC)

Product Details

Purpose:	CMA1
Immunogen:	Peptide with sequence C-QFRHPKYNTSTLHHD, from the internal region of the protein sequence according to NP_001827.1.
Sequence:	QFRHPKYNTS TLHHD
Isotype:	IgG
Cross-Reactivity:	Human
Purification:	Purified from goat serum by ammonium sulphate precipitation followed by antigen affinity chromatography using the immunizing peptide.
Grade:	Verified

Target Details

Target:	CMA1
Alternative Name:	CMA1 (CMA1 Products)
Background:	CMA1, chymase 1, mast cell, CYH, MCT1, MGC119890, MGC119891, chymase 1 preproprotein transcript E, chymase 1 preproprotein transcript I, chymase, heart, chymase, mast cell, mast cell protease I
Molecular Weight:	35kDa
Gene ID:	1215
NCBI Accession:	NP_001827
Pathways:	ACE Inhibitor Pathway , Peptide Hormone Metabolism , Regulation of Systemic Arterial Blood Pressure by Hormones , Carbohydrate Homeostasis

Application Details

Application Notes:	Immunohistochemistry: Paraffin embedded Human Testis and Tonsil (Mast cells). Recommended concentration: 1.5 µg/mL. Western Blot: In transfected HEK293 transiently expressing full-length Human CMA1 (myc and DYKDDDDK tagged), a band of approx. 35 kDa was observed. No bands were observed in mock-transfected HEK293 and the same band was observed using anti-DYKDDDDK tag an Peptide ELISA: antibody detection limit dilution 1:128000.
Comment:	Purchase the +ve control! The transfected lysate used to QC this product is available for sale. Please email sales@everestbiotech.com to request datasheet, pricing and delivery information.
Restrictions:	For Research Use only

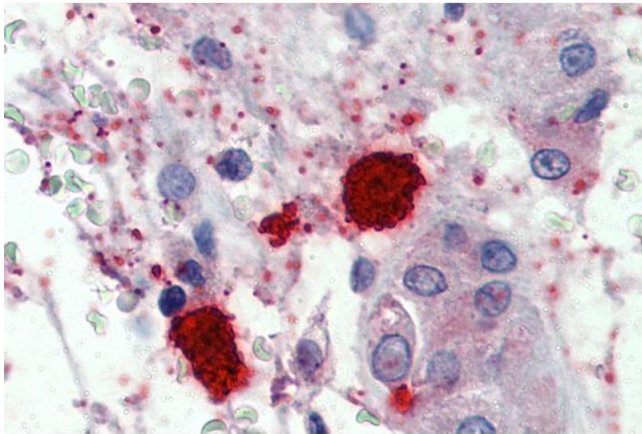
Handling

Format:	Liquid
Concentration:	0.5 mg/mL
Buffer:	Supplied at 0.5 mg/mL in Tris saline, 0.02 % sodium azide, pH 7.3 with 0.5 % bovine serum albumin.
Preservative:	Sodium azide
Precaution of Use:	This product contains Sodium azide: a POISONOUS AND HAZARDOUS SUBSTANCE which should be handled by trained staff only.

Handling

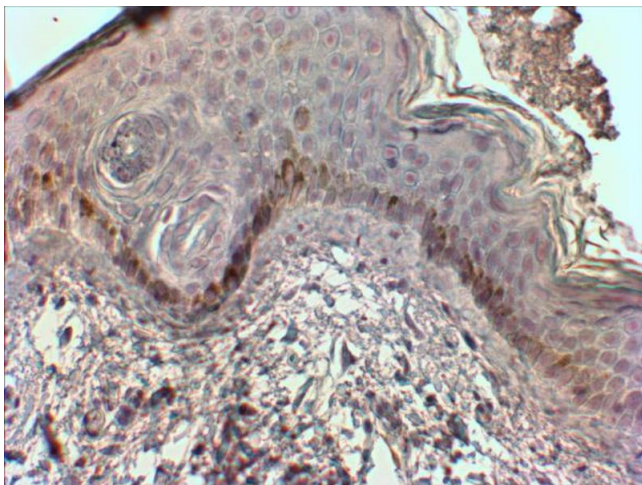
Handling Advice:	Minimize freezing and thawing.
Storage:	-20 °C
Storage Comment:	Aliquot and store at -20°C, with minimal freeze/thawing. A working aliquot may be refrigerated at 4°C for a few weeks and still remain viable.

Images



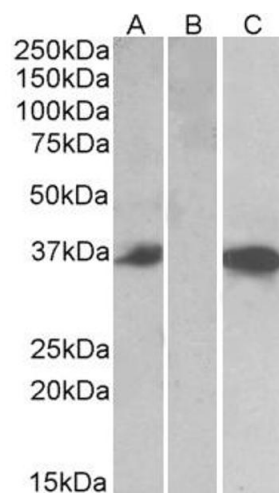
Immunohistochemistry

Image 1. ABIN768626 (1.5µg/ml) staining of paraffin embedded Human Testis (Mast cells). Steamed antigen retrieval with citrate buffer pH 6, AP-staining.



Immunohistochemistry

Image 2. ABIN768626 (2µg/ml) staining of paraffin embedded Human Skin. Steamed antigen retrieval with citrate buffer pH 6, HRP-staining. **This data is from a previous batch, not on sale.**



Western Blotting

Image 3. HEK293 lysate (10ug protein in RIPA buffer) over expressing Human CMA1 with DYKDDDDK tag probed with ABIN768626 (0.5ug/ml) in Lane A and probed with anti-DYKDDDDK Tag (1/3000) in lane C. Mock-transfected HEK293 probed with ABIN768626(1mg/ml) in Lane B. Primary incubation was 1 hour. Detected by chemiluminescence.

Please check the [product details page](#) for more images. Overall 4 images are available for ABIN768626.