



[Go to Product page](#)

Datasheet for ABIN768628

anti-HOXB9 antibody (Internal Region)

1 Image

Overview

Quantity:	100 µg
Target:	HOXB9
Binding Specificity:	Internal Region
Reactivity:	Human, Mouse
Host:	Goat
Clonality:	Polyclonal
Conjugate:	This HOXB9 antibody is un-conjugated
Application:	Western Blotting (WB), ELISA

Product Details

Purpose:	HOXB9
Immunogen:	Peptide with sequence CEGSEDKERPDQTN, from the internal region of the protein sequence according to NP_076922.1.
Sequence:	CEGSEDKERP DQTN
Isotype:	IgG
Cross-Reactivity:	Dog, Human, Mouse
Purification:	Purified from goat serum by ammonium sulphate precipitation followed by antigen affinity chromatography using the immunizing peptide.
Grade:	Verified

Target Details

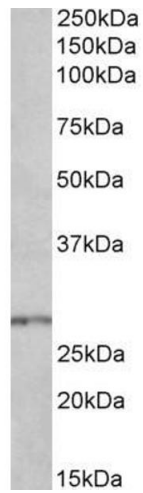
Target:	HOXB9
Alternative Name:	HOXB9 (HOXB9 Products)
Background:	HOXB9, homeobox B9, HOX-2.5, HOX2, HOX2E, homeo box 2E, homeo box B9
Molecular Weight:	28.1kDa according to Human NP_076922.1 and 28.0kDa according to Mouse NP_032296.2
Gene ID:	3219, 15417
NCBI Accession:	NP_076922

Application Details

Application Notes:	Western Blot: Approx 27 kDa band observed in Human Brain (Cerebellum) and Mouse Spinal Cord lysates (calculated MW of 28.1 kDa according to Human NP_076922.1 and 28.0 kDa according to Mouse NP_032296.2). Recommended concentration: 0.3-1 µg/mL. Peptide ELISA: antibody detection limit dilution 1:4000.
Restrictions:	For Research Use only

Handling

Format:	Liquid
Concentration:	0.5 mg/mL
Buffer:	Supplied at 0.5 mg/mL in Tris saline, 0.02 % sodium azide, pH 7.3 with 0.5 % bovine serum albumin.
Preservative:	Sodium azide
Precaution of Use:	This product contains Sodium azide: a POISONOUS AND HAZARDOUS SUBSTANCE which should be handled by trained staff only.
Handling Advice:	Minimize freezing and thawing.
Storage:	-20 °C
Storage Comment:	Aliquot and store at -20°C, with minimal freeze/thawing. A working aliquot may be refrigerated at 4°C for a few weeks and still remain viable.



Western Blotting

Image 1. ABIN768628 (0.3µg/ml) staining of Mouse Spinal Cord lysate (35µg protein in RIPA buffer). Primary incubation was 1 hour. Detected by chemiluminescence.